

jersey^{NZ}

FOCUS

JUNE 2024 | OFFICIAL PUBLICATION OF JERSEY NZ



PG 4 **GLANTON JERSEYS**

PG 52 **FERDON CELEBRATION
SALE**

THE NEW ZEALAND JERSEY CATTLE BREEDERS ASSOCIATION (INC)



JX STONEY {3}



14JE00769 JX SPRING CREEK MARLO STONEY {3}-ET JNS-TF JH1F JHPF
JX MARLO {2} X ALLSTAR X Q IMPULS



288/50 BW

JX THRASHER {6}



7JE01758 JX CDF JLS PILGRIM THRASHER {6}-ET JNS-TF JH1F JHPF
PILGRIM X VICEROY X SOLEIL



309/45 BW

JX PINE {6}

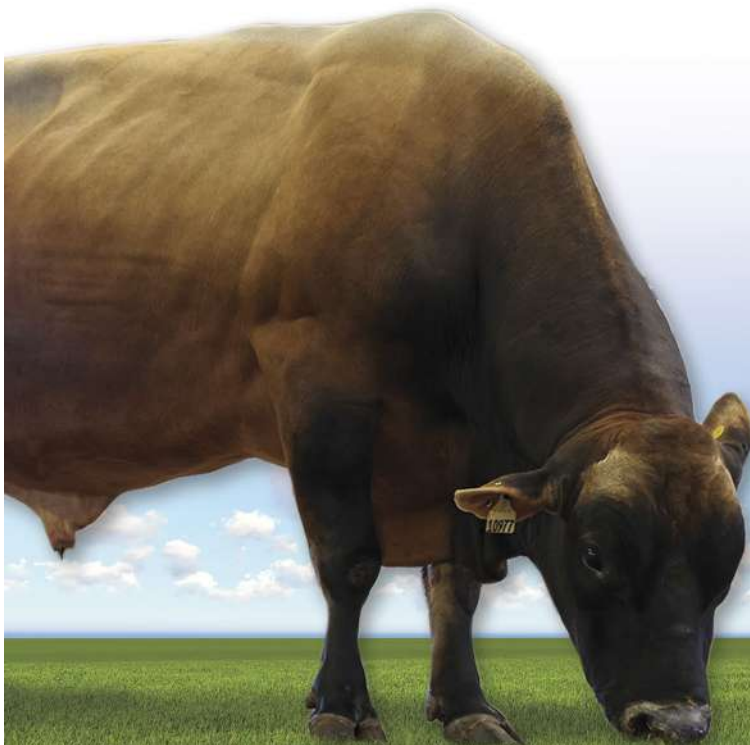


7JE01699 JX AHLEM FRISCO PINE {6}-ET JNS-TF JH1F JHPF
FRISCO X DIMENSION X ACTION



387/67 BW

**YOUR TOP SOURCE
 OF OVERSEAS
 HIGH BW OUTCROSS**



ABOVE: VICTORY FARMS
STONEY DAUGHTERS
 LEFT: JX CDF JLS PILGRIM
THRASHER {6}-ET
 RIGHT: JX GOFF **PINE**
 42981 (4) VG-85

Product of the USA



WORLD WIDE SIRES • NEW ZEALAND

www.wwsiresnz.co.nz

office@wwsires.co.nz | 03 338 4560



™gender SELECTED is a trademark of Select Sires Inc. ®RobotPRO, GrazingPRO, FeedPRO, FertilityPRO and Mastitis ResistantPRO are registered trademarks of Select Sires Inc. Ultraplus™ is a trademark of STGen LLC. All gender SELECTED semen is processed using Ultraplus™ technology. ®JPI is a trademark of the AICA. 04/24 NZEL data.

jersey FOCUS

Table of Contents

PG#	Topic		
2	President's Perspective	47	Obituaries
3	General Manager's Comment	48	Show Season Highlights 2023/24
4	Glanton Jerseys	52	75 Years of Ferdon tops at \$24,000
9	JerseyNZ Service Awards	53	Sales Results
10	Semex Jersey National On Farm Challenge 2023/24	56	Dates to Remember
14	JT Thwaites Sire of the Season	56	Committees
16	Rock View Farms	57	Office News
18	Jerseyland Farms Update	58	Club Contacts
19	Dawick Family Gift	59	New Members
20	JerseyNZ Governance Development Programme	59	Scholarship Fund Roll of Honour
20	Murray Harnett Challenge Trophy	60	International news – Working Towards the Future
20	World Wide Sires All Breeds Young Judge Competition		Stewart Anderson – Breeding to improve the NZ dairy industry
21	Ian Harris Memorial Heifer Competition	63	Regional Ambassadors
21	Youth Awards		Lower Waikato Jersey Club Report
21	All Breeds Youth Camp	65	Te Awamutu Jersey Club Report
22	JerseyNZ Female Hall of Fame	67	Hawera Jersey Club Report
24	Annual Conference 2024	68	Strategic Plan 2024
26	Annual Conference Gallery	70	
28	Special Awards 2024	71	
29	Matriarch Genetics Update		
30	Jersey Advantage Update		
33	RAS List		
34	JerseyGenome update		
36	Tarnhowe Jerseys - A family passion for Breeding the Jersey Cow		
40	Registrations		
42	TOP Review 2023		
43	Jersey Future		
46	Fertility Focus: NZAEL & DairyNZ's work on improving fertility indicators		

290 Tristram Street, Hamilton 3204
PO BOX 1132, Hamilton 3240

Telephone: 07 856 0731

Email: info@jersey.org.nz

Website: jersey.org.nz

Facebook: Jersey NZ

ISSN 2537-9232.

Disclaimer

Statements made by contributors to the Jersey FOCUS or views expressed by writers of Letters to the Editor of the Jersey FOCUS are not necessarily those of the New Zealand Jersey Cattle Breeders Association (Inc).

Front cover

Herd Scene Entry from Daniel Charteris in the 2023 World Wide Sires Photo Competition.

President's Perspective

Shorter daylight hours and cooler temperatures are signalling the end of another dairy season. It has been quite a varied season with some regions faring a lot better than others.

The end of the season sees many prominent breeders choose to leave the dairy industry and sell their herds. While it may seem sad to see some great herds dispersed, the opportunity to purchase into such valuable genetics is part of an important part of succession for the Jersey breed. It is encouraging to see many young farmers choosing Jerseys.

As a young 22 year old consulting officer I was asked by a director of the Dairy Board how to increase the production on his farm by 20 percent – my answer was to sell to a younger farmer. My reply may have been in jest at the time, but was tinged with some seriousness. The younger generation in any field will bring in fresh ideas, enthusiasm, and usually in the case of farming, some debt that needs to be repaid – a very good incentive to drive production and profitability!

We are seeing some challenging times ahead – consumers as well as our own farming businesses are having to balance higher costs of interest, energy and other inputs with an income that isn't keeping up to the level it should be. It's an age-old issue with farming – while some move out of the traditional price taker model, it's not an option for everyone, so we rely on innovation and technology to help us keep ahead. With margins squeezed it becomes even more important to ensure our money is spent on improving our returns.

It has been a focus for JerseyNZ to ensure that our members get a return for the services they invest in. Some of these services impact directly on profit – such as providing excellent

genetics from Jersey Future bulls, and some are fun for some and important marketing for others – such as the Semex On-Farm Challenge. While the dollars pay the bills, being able to have fun while farming is something I believe is important.



Julie Pirie

The JerseyNZ board recognised the importance of keeping costs of services as low as possible, but we are not immune to rising costs, and as a result you will see costs increasing for various services this year.

We value any feedback on service delivery. There is a lot we'd really like to be able to do, and some things we can do better, we really do appreciate the feedback received from members.

I've enjoyed some fun events recently with the JerseyNZ conference and a trip to Australia for a friend's birthday and the Jersey Australia conference in Northern Victoria.

Julie Pirie | President

Jersey NZ Board



Julie Pirie
President
Ngatea
jpirie@jersey.org.nz
027 608 2171



Glenys Ellison
Hamilton
gellison@jersey.org.nz
021 147 4490



Tony Landers
Vice President
Hawera
tlanders@jersey.org.nz
027 458 4465



Fiona Carrick
Cambridge
fcarrick@jersey.org.nz



Barry Montgomery
Dargaville
bmontgomery@jersey.org.nz
021 034 0068

Our Strategic Purpose

Supporting our membership and wider Jersey community by promoting and driving the Jersey breed and Jersey products

Animal Evaluation Data

Unless otherwise stated, all BW, PW and LW ratings shown throughout this issue are as at the Animal Evaluation run of 17 May 2024.

Unless otherwise stated, all NZMI figures quoted throughout this issue are as at the NZMI run of 17 May 2024.

General Manager's Comment

Fresh from the JerseyNZ Annual Conference in Rotorua, we were delighted with the feedback received from participants. While delegate numbers were down a little, the 101 members, speakers, sponsors and staff in attendance over the course of the three days all enjoyed their participation and gained value from both the business and social activities.

Highlights for many were the speaker sessions including boxer Mea Motu and the discussion panel hosted by Dr. Jacqueline Rowarth; the Jersey Pride Sale at the Agrodome; and the Awards Dinner. My personal highlight was successfully handmilking a Jersey cow at the Agrodome (pew, that could have been embarrassing!).

This year we also took the time to highlight the fantastic success of two of our collaborative programmes that both bring income to the Association and support the genetic gain of the Jersey breed. With more than 50% of the young bulls selected for the Jersey Future team since its inception in 2017 going to on to be marketed by LIC teams including Premier Sires, Jersey Future must be one of the most successful young bull programmes anywhere.

The JerseyGenome programme in conjunction with CRV has also been successful beyond our expectations. CRV anticipated 1-2 bulls being purchased annually from this genetically selected heifer programme. Since 2019 alone, 34 young bulls have been purchased via the JerseyGenome programme and J T Thwaites Sire of the Season Glen Kaycee Sherlock JG currently tops the all-breeds RAS List. JerseyNZ members should be rightfully proud of both programmes.

This winter issue of the Jersey Focus highlights two members both retiring from milking Jerseys, but at two ends of the spectrum. Rob and Alison Thwaites of Glanton Jerseys, Hawera, have now retired after a lifetime of milking Jersey cows, and we catch up with them to discuss the highlights of their career. More recent JerseyNZ members Gary & Karen Peters of Rock View Jerseys, Midhirst also have a great story.

Building a new herd with many Jerseys for an extra year after their farm sale fell through saw the couple become fast Jersey converts, even if it was just for a season!

For our historical article, our newest JerseyNZ team member Alayna Judge has contributed an article on her family's Tarnhowe herd. As always, we celebrate the success of members with national results in our flagship competition the Semex On Farm Challenge, and the prestigious J T Thwaites Sire of the Season Trophy. Regular contributors include Jerseyland Farms; the JerseyNZ Governance Development Programme; Jersey Advantage; and Matriarch Genetics as they all provide updates on their recent activities. We also profile the most recent JerseyNZ Hall of Fame inductees and the recipients of the 2024 Special Awards.

Member support for the Jersey Focus in the form of advertising ensures that our flagship publication remains relevant to our members and for use as a promotional tool. This support has waned in recent years meaning that the Jersey Focus no longer pays for itself. Advertising is not expensive, and there are deals available for members who agree to placing consecutive ads. You only need to let us know what you want in your ad and we will design it for you. As JerseyNZ has a brand, so do you as farmers through your stud name and we encourage members to promote their own brands and share their success.



Pam Goodin

Pam Goodin | General Manager

Jersey NZ Team



Pam Goodin
General Manager
pgoodin@jersey.org.nz



Michelle Calcott
Business Administrator
mcalcott@jersey.org.nz



Alayna Judge
Member Services Administrator
info@jersey.org.nz



Sean Bresnahan
Digital Design Coordinator
sbresnahan@jersey.org.nz



Jackie Kennedy
Communications & Marketing Coordinator
jkennedy@jersey.org.nz

The Jersey FOCUS

The Jersey FOCUS is the official publication of Jersey NZ published bi-annually in June (Winter) and November (Spring) respectively.

Jersey NZ is the official trade name of the New Zealand Jersey Cattle Breeders' Association Inc.



Glanton Jerseys

Written by Pam Goodin

After a lifetime of dairy farming, retirement is finally calling for Jersey breed stalwarts Rob & Alison Thwaites and their famed Glanton herd at Hawera. The farm and herd are both sold, and when visited in mid-May only the heifers are still on farm, on their way to their new home shortly.

Rob & Alison are still firmly ensconced in their home though, having retained the house and two hectares of land following the farm sale to their neighbour. Their plan is to stay here for at least the next two years while they plan their next move. They have purchased a 30-hectare coastal block further up the road that shares a boundary with a block owned by daughter Mylie and partner Matt. Here they will build their new home.

The herd has mainly been sold from the paddock. The calves, in-calf heifers and two-year-olds have gone to once-a-day farmers Matthew & Emma Darke (Rockland Jerseys) at Piopio. While the pick of the three-year-old & over cows went to the Cartwright Family (Tawa Grove) at Inglewood, breeders of the famed bull Tawa Grove Maunga (CRV). Son and son-in-law Tom Cartwright and Craig Wellington (Longbridge Jerseys) farm separately and welcome the addition of the Glanton cows to their herds. The balance of the herd was sold recently via Link Livestock to Suzy Riddington (Kaahu Jerseys, Atiamuri). Those cows had just arrived at their new farm when Rob & Alison were interviewed, and Suzy was extremely happy with her purchase.

Rob found he was not as emotional as many may have thought when the cows finally left the farm. Having turned 70 he is now ready to slow down a bit, and the farm and herd sale has been well planned over the last couple of years. They already had good relationships with both the Darke and Cartwright families, having sold empties to Matthew & Emma for a few years. They kept back two of the best two-year-olds for the Cartwrights too, including the dam of the top priced calf at the recent Jersey Pride Sale. She had been passed in at \$15,500 at the 2023 Jersey Pride Sale, and her yearling heifer, Glanton FC Bane, sold for \$16,900 in 2024.



Some of the recent awards from LIC Premier Sires Breeders Day

Their best cow this season was Glanton Triple Baxter, winner of the Mitchell Challenge Trophy (Top BW Cow Award) for the 2022/23 season. Sadly though, Baxter was lost a couple of months ago, never recovering from an infection after slipping on the concrete. Alison bemoans that the best cows are often the ones lost early. The dam of famed sire, Glanton SS Bastille SJ3, also died of bloat during the winter as a three-year-old.

Having both milked 170 cows twice a day each season until the age of 70, Rob comments that their recently started 'winter holiday' will just keep going! They have always milked on this farm, and it has always been a Jersey farm, although now it will be a crossbred farm.

It is well known that Rob is the son of famed breeder Jim Thwaites, whose memory is kept alive in the J T Thwaites Sire of the Season Award made by JerseyNZ. Jim was the breeder of Glanton Red Dante, named Sire of the Century by JerseyNZ in 2002; was named Dairy Person of the Year in 1997 and was also awarded an MBE for services to the dairy industry. Rob & Alison purchased his father's herd, and Alison also comes from a dairy farming family with her parents, Margaret and Don Brown, having bred industry bulls including Royals Green Elmo, used extensively in NZ and Australia. Her brother, Murray, had a crossbred herd and 15-20 years ago had the top BW herd in NZ; while her other brother, Geoff, has the Royals Green Stud in Northern Victoria. With some sons still coming through awaiting proofs, there is still time for Rob & Alison to have their names engraved on the prestigious J T Thwaites trophy.



Their farming and breeding philosophy solely revolved around profit. While to many this may seem one-dimensional, Rob and Alison believe initially it was influenced by high debt, high interest rates, four children and wanting an above-average standard of living. Always convinced that pasture-based farming and NZ Jersey genetics are world class, Rob has never been tempted to milk another breed. The easy-care Jersey breed was vital to them with no staff and having to adapt milking systems around their busy growing family.

Their four children and support of their activities meant that farming worked around their family but also provided them

with some amazing opportunities. After each afternoon milking, Alison would come home to help the children with their homework and music practice. The children all excelled at High School, both academically and in multiple sports. Rob and Alison enjoyed being active sideline participants with each endeavour.

Alison had followed a childhood dream, purchasing and learning to play the piano accordion once she left home as a young adult. From the age of four, each of her children then also started lessons, often travelling to Auckland for competitions. At the age of 9, Mylie started lessons once a week on a Sunday in Wellington. One by one all four children benefitted from these lessons, and for 13 years Rob and Alison would milk early on Sunday morning before driving the family to Wellington for lessons, returning to milk the cows late on Sunday evening. Daughters Mylie and Hilary were both escorted by Rob to World Championships in Denmark and Hungary/Slovakia, both finishing in the top 10 and the highest placed contestants outside eastern Europe. All four children won multiple NZ and Australian titles.



Trophies received at the recent Hawera Jersey Club awards

Mylie went on to attend the Tchaikovsky Institute in Ukraine completing a performance-based Music degree, with all her study completed in Russian. After 10 years in the Ukraine, she returned home to Taranaki and is currently a process operator at the Kapuni Urea plant. Mylie, partner Matt and son Jim (2y), will shortly be moving into their new home.

Hilary works as a pilot, and she and husband Nick spent several years flying for Emirates, recently returning to New Zealand after the birth of their son Hendrik (16m). They are now flying Australia & Pacific routes for Air

New Zealand.

Christopher is an electrician who broke his back playing AFL in Australia three years ago. Having a successful world-first operation involving titanium vertebrae, Christopher is once again mobile and has returned to live in New Plymouth with his partner Beth. Chris has a daughter, Maddison (10y).

Campbell completed a communication degree, initially working in radio. He is now a builder and lives in New Plymouth with his wife Anitra and their daughter Rory (8m).

Rob's proudest achievement as a Jersey breeder was breeding JerseyNZ inaugural Hall of Fame recipient Glanton Mans Blanche. Just halfway through her two-year-old lactation, Rob and Alison already knew that she was the cow of a lifetime, and contacted Malcolm Ellis at LIC. When Malcolm walked through the mob containing her among her female relatives, within seconds he identified her as the equal of any cow in New Zealand. Rob and Alison are extremely grateful to Malcolm for his input into her breeding programme with around 25 bulls taken by LIC from that cow family alone, along with several bulls from other cow families. Over the years since, Rob and Alison have built close relationships with Malcolm Ellis and his successors at LIC Livestock Selection, Casey Inverarity and Danie Swart. For the last 15 seasons, the highest producers on the farm have been Blanche and her descendants.

Blanche and her family are the epitome of Rob & Alison's philosophy of breeding for profit and reliance on pasture-based New Zealand genetics. The two traits that Rob has been the most conscious of during his breeding career have been capacity and temperament. Capacity doesn't always mean that a cow will be the best producer, but it is a good indication and they will look great. Knowing that they would be milking the herd themselves on a long-term basis, temperament has been vital. They are proud that all the bulls bred to date for the industry have been well above average in both traits.

They have been very strong supporters of the across-breeds evaluation system, believing that it showcases Jerseys to New Zealand farmers. The Ranking of Active Sires (RAS) list is an important tool for dairy farmers, highlighting the Jersey breed with more than 50% of the bulls currently on the list being Jersey.

Without a doubt, Rob believes that Okura LT Integrity is the best bull that he has ever used. The best of his daughters around the country are his idea of the perfect Jersey cow. Integrity has had a significant impact on the Glanton herd, and his daughters everywhere are easy to spot being capacious with great teat placement.

Rob and Alison have been long-time supporters of JerseyNZ. All two- and four-year-olds in the herd have been TOP inspected annually, and of course the herd is fully registered. JerseyNZ's Jersey Future programme with LIC has now been supported with three bulls to date, two of which (Baxter & Burton) have been marketed in LIC Premier Sires teams. They have also supported the flagship Jersey Pride Sale in recent years, with one descendant of Blanche selling as a calf for \$14,200 (Glanton Triple Bardot ET, 2019) and another heifer sold at Jersey Pride for \$23,600 with the proceeds donated to Jersey Advantage, an organisation also supported by the

Thwaites family. In the recent 2024 sale Glanton FC Bane topped the sale at \$16,900 creating a new record for a heifer calf sale in New Zealand, dropping her herdmate Bardot into second place.

JerseyNZ's wider programmes with the focus of income diversification also gain support from Rob. Link Livestock and the investment in Jerseyland Farms generate income to support the Association's activities and the JerseyNZ collaboration with Jersey Advantage. At the recent Annual Conference, Rob was quick to acknowledge the success of the Jersey Future programme as unbeaten internationally in terms of proven bulls as a percentage of the entire programme. A regular attendee at industry meetings, and a great supporter of Fonterra and farmer co-operatives, Rob always supports in a positive fashion, acknowledging success.



Glanton Mans Blanche (2022 Hall of Fame)

Rob also acknowledges those fellow breeders who have supported him and his breeding goals over the years. Bruce Cutforth along with Luke & Lyna Beehre (Okura) have supported him with breeding advice. He has had a more than 40-year association with Mark Townshend and believes his knowledge of the dairy industry and the Jersey cow is second to none. He has always respected Mark's advice. Rob has really enjoyed a long-time association with the Hawera Jersey Club, and comments that with Cliff Shearer (Glenbrook) involved there is never a dull moment. Likewise he has observed the rise of local breeders Tony & Lesley Landers (Glenui), going from 'zero to hero' in a 30-year period and now having one of the elite herds in New Zealand supplying Jersey bulls to the industry. He has greatly admired the development of this herd that had never seen an AB straw before Tony took over, proving to the industry what can be achieved.

One of Rob's annual highlights has been taking part in Nigel Juby's Ove-Achievers genetics trips, and the association via these trips with bull breeders from other breeds. While not all visits are dairy related, they are all very interesting and Rob ensures that there is Jersey content in every tour schedule.

In 2023, Rob and Alison were acknowledged by Jersey NZ when they were awarded a Distinguished Members Award, nominated by the Hawera Jersey Club.

So what does retirement hold for Rob and Alison?

The next couple of years will see them build a new home and develop their new coastal block that also has a lake and stream. A three-bedroom home is being planned in conjunction with a local award-winning architect, and will make the most of the 360 degree ocean and mountain views that

the property enjoys. There will be stock on the land at some point, but Rob is unsure at this stage what will pan out. What is sure is that Rob has no intention of disappearing as a breeder, he will be around at Jersey events for a long time to come yet.



2023 Distinguished Members Award

The Hawera Jersey Club is delighted to nominate Rob & Alison Thwaites for a Distinguished Members Award from JerseyNZ.

Rob & Alison are valued members of our Club and are fully involved in every event we have. Alison hosts lunches and afternoon teas for our Club events and also has Judges or visitors to the Club to stay. They always enter our heifer days and our annual onfarm Club Show. Their recent highlight has been Glanton Integrity Merry gaining Champion Cow twice. The bull calf class is always keenly contested and Glanton has won this class many times. The rest of us just try to beat Alison in this class.

Glanton is at the top of Jersey bull breeding in New Zealand. Many of their elite bulls have descended from one of their greatest cows Glanton Mans Blanche who was one of the first two cows inducted into the Jersey Cow Hall of Fame in 2022. Blanche has many sons, grandsons and great-grandsons in the top echelon of BW. Currently Glanton Desi Banff sits at number three and Glanton SS Bastille S3J at number six.

Glanton has been a supporter of the national Jersey Pride sale and they have the all-time record price for a Jersey incalf heifer of \$23,600 for Glanton Punch Bria ET in 2022 and the all-time record price for a yearling of \$14,200 for Glanton Triple Bardot ET in 2019.

Rob has a Jersey family pedigree second to none with his parents Jim & Betty Thwaites also being very involved in the Jersey Association with Jim being a Vice President of the NZJCBA. As members of the Hawera Jersey Club from

before Rob was born, it means that Rob has been involved with our Club for his whole life. The Glanton stud bred Glanton Red Dante who was used all round the world and is one of the most famous NZ Jersey bulls.

Alison's parents Don & Margaret Brown had a herd of grade Jerseys but purchased bulls from the Maori stud at Lepperton which was the premier breeding herd in NZ and the Pampas stud in Levin who had the highest producing herd in NZ at that time. The Browns were one of the first herds to use AI in NZ. Alison's brothers had pedigree Jersey herds too with Geoff having the Royals Green Jerseys herd and Murray having the Brownson stud. The family bred Royals Green Elmo who is one of the greatest NZ bulls used in Australia.

For many years Alison allowed many local school children to come to their farm and use their calves for school calves and calf club days. Many of these calves also went to the local A & P shows. A labour of love which shows through today with a herd of extremely quiet cows. Rob has always attended and contributed to Dairy Company and LIC meetings and events. Rob & Alison enjoy attending events all over NZ to do with dairy farming and in particular the Jersey cow. They are great supporters of the breed.

Rob is a Past President and a Life member of the Hawera Jersey Club. We believe they are fully deserving of this award.

The Hawera Jersey Club.

Find out how you can sell smarter with **bidr**[®]

NZ's largest online livestock
trading platform



Jersey NZ Service Awards

These awards are designed to acknowledge members support for the Association through use of its products and services. Members must 'qualify' for consideration of the award in the following areas:

- They must use Jersey Future (must purchase minimum quantity of 20 straws of Jersey Future semen for use in their own herd)
- They must TOP & Classify their entire two-year-old contemporary group of heifers
- They must register all animals over Jersey 12 content (excluding any lease animals)
- They must complete a minimum of four Herd Tests within a season
- They must submit at least one heifer for consideration for the Jersey Genome programme.

To acknowledge the number of years the breeder has achieved the award, a number will appear at the end (For example, Jersey NZ Services Award 1 indicates one year of meeting all criteria).

Farm Name	Breeder Name	Years achieved	Farm Name	Breeder Name	Years achieved
Kaycee Farms Ltd	Kevin & Christine Tucker	8 Years	Abba Park	Natasha Upson & Steven Park	2 Years
Pirie Farms Ltd	Brian & Julie Pirie	8 Years	Dairy Glenn Farm Ltd	Hamish Mead	2 Years
R & G Ellison	Roger & Glenys Ellison	8 Years	Malibu Jerseys	Helen Dimock	2 Years
Wilson Farms Ltd	Steve & Naiouli Wilson	6 Years	DJ & FJ Lynch Ltd	Daniel & Freya Lynch	1 Year
Wairakau Farm Trust	Graham & Lynley Lawry	6 Years	GPS 2007 Ltd	Glenn & Chantal Wilson	1 Year
GJ & PS Wilson	Grant & Pam Wilson	5 Years	Barneyo Trust P/ship	Paul & Clare Bishop	1 Year
Goreland Partnership	Tony Landers	4 Years	Ngatimaru Farming	Stuart & Sara Russell	1 Year
Benworth Ltd	Krystle Bennett & Nigel Brinkworth	3 Years	Company Ltd		
Gayley Wood Farms Ltd	Graham, Marian & James Wallace	3 Years	Leadamoo Farming	Dave & Lea Moodie	1 Year



Show Ethics

The Dairy Cattle Show Code of Show Ethics was updated at the RAS Annual General Meeting in June 2023. Major changes to the code include:

- Exhibitor Responsibility
- External teat sealing and teat setting will be allowed (conditions apply)
- Internal manipulation of the teat is banned and the length of the teat may not be altered.
- The use of a device or product to artificially create or enhance the udder crease is not allowed.

The updated code may be viewed at [Our Rules, Regulations and Policies – Royal Agricultural Society New Zealand \(ras.org.nz\)](https://www.ras.org.nz). We recommended that any member intending to exhibit at any Show makes themselves familiar with this document.

It is also recommended that exhibitors download and complete the Exhibitor Declaration Treatment Form for each show attended and keep a copy in their show box.

SEMEX Jersey National On-Farm Challenge 2023/24

Below are the full results for the 2023/24 Semex National Jersey On Farm Challenge.

Congratulations to everyone that took part in the competition and a special thanks to Semex NZ for their continued sponsorship, plus our 2023/24 Judge, Luke Gilbert for taking the time to travel across our countryside.

2 YEAR OLD

1ST	Leithlea Hatman Gill - Leithlea Jerseys - T & M Luckin
2ND	Leithlea Hatman Dance - Leithlea Jerseys - T & M Luckin
3RD	Ferdon Victorious Shirlee - Ferdon Genetics - W & M Ferguson



1ST



2ND



3RD

2.5 YEAR OLD

1ST	Grahmar Carrick Gala ET - Gayley Wood Farms Ltd - G, M & J Wallace
2ND	Anchor Jiggy Rilla S0J - Anchor Jerseys Limited - A Shaw
3RD	Kaitaka Gym Rear P - Kaitaka Jerseys - C & N Hickey



1ST



2ND



3RD

3 YEAR OLD

1ST	Ferdon Excitation Bella - Ferdon Genetics - W & M Ferguson
2ND	Premier Goaler Azalia - Premier Cattle Company Ltd - D & C Hayward
3RD	Allandale Vic Penny - Leithlea Jerseys - T & M Luckin



1ST



2ND



3RD

3.5 YEAR OLD

1ST Jezmia Quadrant Vera - RMH Dairy Ltd - A Hunter

2ND Kaitaka Carrick M-Peru - Kaitaka Jerseys - C & N Hickey

3RD Kaitaka Leopard Juno - Kaitaka Jerseys - C & N Hickey



1ST



2ND



3RD

4 & 5 YEAR OLD

1ST Ferdon Tbone Veneer - Ferdon Genetics - W & M Ferguson

2ND Leithlea Val Spangle - Leithlea Jerseys - T & M Luckin

3RD A'Charnaich Valen Diva S2J - The MacDonald Family Trust - P & P Macdonald



1ST



2ND



3RD

6 & 7 YEAR OLD

1ST Ngatea Ogi Clover S3J - Pirie Farms Ltd - B & J Pirie

2ND Hasty Spring Koop Fancy - Bradnic Partnership - B Parkes & N Johnson

3RD Glenalla Links Clover S2J - Sherborne Farm - S & A Scherer



1ST



2ND



3RD

8 & 9 YEAR OLD

1ST Poplarbrae Hotm Gay - J MacDonald

2ND Ferdon BS Vienna ET - Ferdon Genetics - W & M Ferguson

3RD Leithlea Van Bertha - Leithlea Jerseys - T & M Luckin



1ST



2ND



3RD

10+ YEARS OLD

- 1ST Leithlea Tequila Sheba - Leithlea Jerseys - T & M Luckin
- 2ND Premier SCD Synergy 5 ET SOJ - Premier Cattle Company Ltd - D & C Hayward
- 3RD Hasty Spring SSM Violet - Bradnic Partnership - B Parkes & N Johnson



1ST



2ND



3RD

NATIONAL TEAM

- 1ST Riverina Jerseys Ltd – W & L Berry
- 2ND S & W Skelton
- 3RD Totara Dairy Ltd – M Williams
- 4TH Pirie Farms Ltd – B & J Pirie
- 5TH Trilogy Farms Limited – M Moffitt & I Phipps
- 6TH P & S Ingram



Highest Semex Conformation Winner

Hasty Spring Koop Fancy

Bradnic Partnership – B Parkes & N Johnson

98.00 points



Supreme Conformation Winner

Ferdon Tbone Veneer

Ferdon Genetics – W & M Ferguson

100.00 points

Full Results for all classes can be found at:
<https://www.jersey.org.nz/semex-on-farm-challenge/>



EST 1946

KARAKA JERSEYS



HIGHLIGHTING THE LASTING BEAUTY OF
STRONG FEMALE COW FAMILIES



Its been a pleasure breeding from strong female cow families over the last 46 years. The Karaka stud was founded by Chris' Grandfather David in 1946 at Karaka Papakura. David purchased Rangī Marie Silver Lady and Rangī Marie Merry Maid (Show Champion) and began the 'Maid' family.

Karaka Aussie Maid Marie has descended from this family and brought us much joy by winning two Supreme Champion awards at the Te Awamutu Jersey Classic On Farm Show with the first coming in 2021 from 157 entries and again in 2023 from 114 entries from all over the Waikato.

The stud now has 10 top cow families. We thank Chris and Jen for allowing Ross to be the breeding manager over the past 18 years.



KARAKA AUSSIE MAID MARIE EX

318BW 577PW 411LW

534 M/S at 6 years

582 M/S at 5 years

593 M/S at 4 years



RANGI MARIE SILVER LADY VHC CP MERIT

**DAM OF RANGI MARIE MERRY MAID
VHC CP MERIT SHOW CHAMPION**

Originating the Maid family in 1946
at Karaka Papakura

VISITORS ALWAYS WELCOME

Chris & Jen Turner - 07 871 5591 - 1 Brills Road, Kihikihi

Ross & Carol Turner - 07 871 7736 - 027 571 773 - 16 Awanui Ave, Te Awamutu, RD 5



JT Thwaites Sire of the Season Glen Kaycee Sherlock JG

Release courtesy of CRV

A Northland-bred Jersey bull that has won a prestigious national award for siring top producing daughters in the New Zealand milking herd, is also an example of how genomics can super charge breeding in our dairy industry.

Glen Kaycee Sherlock JG, a CRV Jersey bull bred by the Tucker family from Northland, has won the JT Thwaites Sire of the Season. He was also New Zealand's top bull across all breeds in the April 2024 Ranking of Active Sires (RAS).

Sherlock and his sire, Pukeroa Gun Walker JG, were both bred through the JerseyGenome™ programme, which is designed to identify elite yearling heifers using genomic selection and customised matings.

The Tucker family are long-standing participants in the JerseyGenome™ programme, and every season make all replacement heifers available for genomic testing. Christine Tucker says their goal was always to produce a bull that would be marketed by a national breeding company, but Sherlock surpassed all their expectations.

"To us having a bull marketed was the ultimate achievement, but it's a complete surprise to see Sherlock come through like he has," says Christine.

The JT Thwaites Sire of the Season award recognises sires who have the potential to significantly influence the quality of cows within dairy herds across New Zealand, says Steve Ireland, convenor for Jersey NZ's Genetics Committee.

"I would like to congratulate the Tucker family and CRV for breeding Sherlock. Sherlock is a very worthy recipient of this award. His 622 BW backed by outstanding production BVs and very positive fertility is an achievement in itself, when you couple this with a degree of genetic diversity, Sherlock's value to the Jersey population will be significant," says Steve.

CRV Regional Breeding Manager Jenna O'Sullivan says Sherlock's success demonstrates the value of genomics to the dairy industry.

“Sherlock offers excellent CRV Health and Efficiency scores. He also offers breeders production with both protein and fat and great conformation,” says Jenna.

Sherlock’s dam Skallywag, was bred through several generations from a cow purchased by the Tuckers in 1989 as they were growing their herd. She was identified for breeding as part of the JerseyGenome™ programme.

“Sherlock’s dam is a big-framed Jersey with better than average production, and CRV selected Pukeroa Gun Walker JG as a complementary mating sire. Sherlock was the resulting bull, born in 2019,” says Christine.

“It was that sire selection, with Walker also being a genomic sire, that has seen the genetic gain come through on Sherlock’s sire’s side.

Jenna says, “Using genomics, we can strategically combine desirable traits and minimise the transmission of undesirable genetic factors. That means we can improve the overall quality of the bull’s progeny.”

CRV is a leader in helping farmers breed healthy and efficient animals. Jenna says Sherlock is an excellent example of the standard the company is setting, particularly with its genomic sires.

“Genomics gives us more accurate insights into a bull’s potential at a much younger age. It super charges our breeding programme by allowing us to make more informed decisions by selecting bulls with complementary genetic profiles to breed with.”

Christine explains that they have always focused on breeding a well put together Jersey cow that is slightly larger with good udders.

“Sherlock is a good example of a sire that will deliver all of that for New Zealand dairy farmers whether they are Jersey breeders or not,” she says.



jersey^{NZ} Farm Signs

Hang it like the Lansdaal’s, screw it to a fence, smack it in your shed, or jimmy up a light display from the electric fence and flash everyone who drives past.

Single Sided = \$150 excl GST

Double Sided = \$200 excl GST

To order email info@jersey.org.nz





Rock View Farms

The last thing most Jersey members would expect to read in the Jersey Focus is an article about the well-known Holstein-Friesian and Ayrshire breeders Gary and Karen Peters of the Rock View stud, Midhirst, Taranaki. But 12 months ago Gary & Karen found themselves needing cows in a hurry – and put together a herd with a large number of Jerseys for the season. Then word got around the grapevine – this herd was a success and the Peters were breed converts!

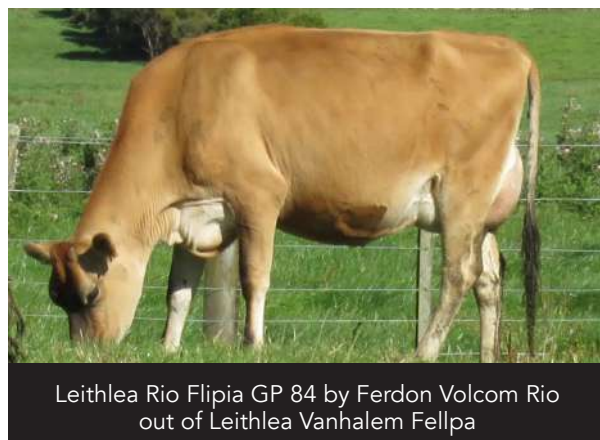


Look at these beautiful udders on these cows from the famous Leithlea Jerseys herd

The 2022/23 season was a tough one. With the farm on the market, it was signed up several times through the season but in turn each sale fell through. As the end of the season neared, the farm was signed up for sale again and this time they thought it was a done deal. So much so that the dispersal auction was booked and the catalogue went out. Then just two days before the dispersal, once again the farm sale fell through. The dispersal proceeded, the cows were sold and most trucked out immediately following the sale.

That left Gary & Karen in a bind – they needed in-milk cows quickly if they wanted to keep supplying for the current season! They purchased some empty cows from friends, and quickly changed from Fonterra to Open Country for what they were sure would be their final season supplying. With the handful of cows that they had kept back from the sale, they were able to milk through the winter with the empty cows they bought in.

Then their attention turned to spring. Gary was talking to friends in northern Taranaki, Robert & Libbie Taylor, who were also getting out of milking and headed up there to check out the cows on offer. They milked a mix of Holstein-Friesian, crossbred and Jersey. Initially Gary had no intention of even looking at the Jerseys, but quickly changed his mind when he saw the big capacious Jerseys, all from the Leithlea herd of Tony & Maureen Luckin, or progeny of Leithlea cows. Always a believer in the value of pedigree, Gary & Karen joined JerseyNZ as new members and registered their Rock View stud name as a new Jersey stud. The spring born Jersey calves were all registered, and the Jersey cows were also TOP inspected. While Gary knew this would not be a permanent herd, he was determined not to waste any opportunity.



Leithlea Rio Flipia GP 84 by Ferdon Volcom Rio out of Leithlea Vanhalem Fellpa

The spring calving period was almost perfect, with no calving issues. They didn't get a lot of heifer calves though as beef had been used over the later calving cows from earlier than he would have done for Midhirst. There were no issues either with the herd gelling together right from the start. All adapted well to the shed and the heifers in particular with their incredible temperament have impressed the couple. So much so that they were just thrilled with the herd that was thrown together to only milk for a season, and became

attached to the cows very quickly, especially a couple of the character cows! They have been swayed to Jersey, and even intend to purchase more to feed calves at their new place this coming season.

Gary readily admits that what surprised him the most about the Jerseys was their potential for production. Where he hadn't been keen on the breed prior because he just didn't think they had the production, he has happily been proven wrong. They have production in spades, a great temperament, and to top it all off Karen thinks they are the cutest cows!

The new 'thrown-together' herd for the 2023/24 season totalled 120 cows, the same number that they had milked in the 2022/23 season. The farm had stayed on the market, and finally sold again early in the season just as they finished calving, going unconditional quite quickly to very keen purchasers. With the herd dispersed again in April 2024, they do not have a complete season's production to compare against the previous herd but confirm that the herd produced an average of 600 kg milksolids by the date of the dispersal sale. Gary comments "they didn't let us down, we were super impressed".



Three top Leithlea cows

On 1 June Gary & Karen will leave their 42 ha farm on Denbigh Rd, just south of Stratford where they have farmed for the past 15 years. They are moving just 2 km up the same road to what has been their runoff, a slightly larger property further up the mountain. It is time to take life a bit easier and rear a few calves and run some beef. The replacement calves have been retained to be sold at a later date and there are already beef calves up there. With a small 16 bale rotary on site, Gary will milk about 20 cows to rear the calves, considering once-a-day milking. Gary will also maintain the AB run that he has had for several years.

A house has been moved onto the new property, although it is not quite ready for them yet. Held up by the Council for about 12 months, once approval was received the house was moved onto the land within two weeks and then the real work started to get it ready for them. The new house is situated in the middle of the runoff and will run off solar power and a windmill. There is also a small backup generator, and they will add another battery so there will always be plenty of power available. Their new view is even closer to Mt Taranaki, with views also out over the local region to the mountains of the central plateau.

Gary & Karen's two children Julia and Jacob will also join them at the new property. Daughter Julia (now 21) is a large part of the reason their operation has always been kept small. Julia

has Cystic Fibrosis, and this has meant numerous hospital stays over her lifetime. However the recent approval of the drug Trikafta has been a real life-changer for Julia, now able to maintain a part time job at a local café. Jacob has recently completed study in digital design in Tauranga, returning home to help out on the farm and with the move recently. He intends to build a tiny home on the new property and start setting up his own business.

The farm they are leaving was also originally their runoff when they were sharemilking. They added the neighboring property, reinstating it to what had originally been one farm, and putting on the dairy shed when they came here 15 years ago. They never really planned on leaving this farm, and prided themselves on staying ahead of many of the compliance issues well before they became mandatory. However in recent years they have found it more and more frustrating with all the requirements of the dairy industry, that seem to be added to each season. They have decided its time for a change, looking forward to a slower pace of life without the tie to year-round milking. Gary & Karen plan to develop the new property, taking some time to reassess their priorities before embarking on any new ventures, not making any major decisions until their first season on the new property is complete.

Gary and Karen have always had Holstein-Friesians. They started their farming career with the breed, have really enjoyed them and love the breed. Long-term members of both Holstein Friesian New Zealand and Ayrshire New Zealand, they saw their membership in JerseyNZ as a natural extension. Breed Society membership adds value to their farming operation, and even on the smaller scale they still intend to register calves even if they are not supplying milk. They recognise that these calves may still be sold, and provide a starting point for a new breeder's plan. A friend has purchased several Jersey calves from them this season, is taking advice on their breeding from Gary and is keen to use Jersey genetics. Gary and Karen have always registered and classified; and always completed 5-6 herd tests annually. They have also been involved in local Holstein-Friesian and Ayrshire clubs. Long-term they have bred for balanced cows with good udders and longevity.

The last word will be left to Gary on his Jerseys, admitting that if he had known they could be this good he would have used the breed much earlier. They came in well with no fuss, were easy to work with and after milking them he thinks they are well put together and fantastic to milk. These Jerseys are just the way he wants his cows – full of milk and capacious. They competed well in a mixed-breed herd and stood their own with great temperament and character. The cows came onto the farm and adapted to the regime very easily, fitting into existing farming practices. The heifers in particular just hit the ground running. Finally, at the end of their season, Gary felt that the Jerseys attracted a lot of interest from the buyers in their second dispersal, and the whole herd sold very easily.



Jerseyland Farms Update

by Julie Pirie

The end of the season for Jerseyland Farms comes with a fair bit of relief. As noted in the last Jersey Focus there were some rough times during the spring. It's pleasing to report things have ended up a lot better.

I have somehow managed to coincide visits to Southland with exceptionally good weather. It was quite a shock to experience a dose of cooler weather on my last visit on 11 April. Despite the weather, the farm was looking great, with very good pasture cover and growth. The cooler weather was a good reminder that cow condition is an important factor to consider for next season, which will be a focus for the drying off.

The farm was 7,350 kgMS behind the previous season in September 2023, this has reduced to 3,770 kgMS following a very good autumn. Drying off decisions will be based on cow condition as pasture cover and supplements on hand is on target. It does highlight the well versed saying that it's difficult to make up for lost production in the spring.

As the focus moves to the next season, there will be some maintenance on farm. The flooding and wet autumn has meant



farm tracks are in need of work, weed control through spraying and some flood damaged fencing are all part of the plan to attend to while the cows are out at winter grazing.

The Board has purchased cows over the season, this will allow us to make more voluntary decisions on selling cows that for various reasons need to be replaced.

Rising interest rates and costs, along with purchasing cows have eaten into profits this year, however, the farm has been able to match last seasons return to investors.

The herd is turning gold very quickly, which will mean milking a few extra numbers next season. The aim is around 640 cows milking, with 240,000 kgMS the target.

There has been a change in the social media reporting – Rachel is adding content to Facebook as time permits straight from the farm – so search Facebook for Jerseyland Farms, and follow on-line.

Jersey^{NZ} – Jerseyland Farms Investors

The following members have supported the Jersey NZ investment in Jerseyland Farms through a donation and/or the provision of an interest free loan to Jersey NZ.

Pirie Farms Ltd
Fyvie Meadows Ltd
Lower Waikato Jersey Club
R & G Ellison
Lynbrook Farm Ltd
Goreland Partnership

Te Awamutu Jersey Club
R & E Riddell
E & S Smeath
R H & J Potts
P & S Ingram
Ede Investments Ltd

Nelson & Golden Bay Jersey Club

Dawick Family Gift

In April, the JerseyNZ team was delighted to receive a visit from the family of George Henry Dawick, former Breed Secretary for many years. Several years ago the family presented the George Henry Dawick Memorial Trophy which is awarded for excellence in the Jersey breed. They have now also presented us with a favourite painting of their father's which has been in the family for a long period. The painting

depicts Comarques Lodge, the seat of W K Hulke who was one of the earliest settlers in New Zealand and who established a purebred Jersey herd in Taranaki in the 1880s. JerseyNZ is grateful to be gifted this beautiful watercolour with two Jerseys in the foreground, and will take great pride in displaying it in the JerseyNZ office.



Left to Right: John, Henrietta and Rick Dawick

Have an opinion on the current industry movement?

JerseyNZ invite members to share their thoughts in the "In My Opinion" segment.

Discuss relevant thoughts regarding the Dairy Industry, Breeding and Genetics, Life as a Farmer or anything else that pops into mind.

Send at any time to: info@jersey.org.nz

Opinions expressed by editorial contributors or claims made in advertisements are not necessarily those of The Jersey FOCUS, General Manager and Board of JerseyNZ.

JerseyNZ Governance Development Programme

JerseyNZ Governance Development Programme welcomes Braydon Schroeder

The participants of the JerseyNZ GDP welcomed Braydon Schroeder at the beginning of the term. Braydon, a member of Holstein Friesian New Zealand, is based in Rotorua where he is a consultant for Perrin Ag.

In addition to his Bachelor of Ag Science (First Class Honours), Braydon has a Post Graduate Certificate in Commerce (with Distinction), Advanced Sustainable Nutrient Management and is qualified in Body Condition Scoring which he keeps current.

He has participated in a number of scholarships, programmes and courses to develop leadership skills (including Ravensdown, Hugh Williams and Kelloggs) and a semester abroad in Canada brought upon further development where he began fitting show cattle across the country.

A farm advisory case study challenge saw him involved in a few agricultural committees at University of Guelph plus various committee roles with Holstein Friesian Youth, Young Farmers (at club, regional and national levels). The Soils Society provided Braydon with perspective and different levels of formal and informal mentoring and training in different governance positions.

Currently he holds positions on the Bay of Plenty New Zealand Institute of Primary Industry Management branch and the Rotorua/Taupo Federated Farmers province which both assist in his development in governance.

Braydon's day-to-day job at Perrin Ag Consultants requires him to work in a board environment and he is exposed to a few



different boards with ranging governance skill levels from beginner to full time independent directors. Braydon states that his motivation for applying to the JerseyNZ Governance Development programme stems from a deep interest in contributing to effective governance practices. He believes that well-informed and skilled leaders are crucial for fostering sustainable development, innovation, and social responsibility. Through this programme, he aims to enhance his understanding of governance principles, acquire practical skills, and develop the leadership qualities necessary to make meaningful contributions to the organisations and communities he engages with.

Welcome aboard Braydon, we look forward to working with you.

The JerseyNZ Governance Development Programme is open to applicants from all the Breed Societies.

Murray Harnett Challenge Trophy

The Murray Harnett Challenge for the JerseyNZ Young Judge competition was keenly contested at NZ Dairy Event.

The winner of this prestigious competition was Riley Taylor (Snowview, Taranaki), with Thomas Jeyes (Manor, Waikato) in second place and Xavier Gread (Xcead, Ohinewai) in third.



World Wide Sires All Breeds Young Judge Competition

After their placings in the Jersey Young Judge competition, Riley Taylor and Thomas Jeyes went on to represent JerseyNZ in the prestigious World Wide Sires All Breeds Young Judge Competition against the first and second placegetters from the Ayrshire New Zealand Arran Trophy and the Holstein Friesian New Zealand Pitcairns Trophy.

In a fantastic result for JerseyNZ, Thomas Jeyes won the Competition, with Riley Taylor in a very creditable fourth position. Congratulations to you both.



Ian Harris Memorial Heifer Competition

Proud Sponsors of the 2024 Competition



2023/24 Competition

Junior Entrants

Entrant	Heifer Selected
Annabel Jeyes	Manor Chrome Delta
Thomas Jeyes	Manor Buzbox Athena
Padraig Williams	Aislin Chrome Emily
Ruby Williams	Williams Quiz Roxy S3J
Charlie Williams	Williams Zambezi Muffin
Jack Williams	Williams Popeye Grace
George Williams	Williams Superman Lauraa
Ariel Courage	Sharons NSD Obelia S2J
Carlisle Christensen	Northern Little Girl S3J
Kemnay Christensen	Northern Darcy
Henry Scherer	Sherborne Rebel Polly
Charlie Scherer	Sherborne Baby Bree
Gabrielle Scherer	Sherborne Matt Fran
Ella Harris	Sherborne Matt Briar

Senior Entrants

Entrant	Heifer Selected
Crystal Scown	Kuku Blackstone Nina
Kimberley Simmons	Brydale Viral Becka
Aaron Courage	Sharons Casino Hat-Trick S3J
Sol Drent	Denson Dale Tbone Beattie ET
Loren Osborne	Denson Dale Rising Desire
Shayne Caird	Shaydoc Victorious Love
Archie Elliott	Manor KTP Surprise S2J

Junior Winner

Thomas Jeyes	Manor Buzbox Athena	174.3 points
--------------	---------------------	--------------

Senior Winner

Shayne Caird	Shaydoc Victorious Love	161.80 points
--------------	-------------------------	---------------

Overall TOP Winner

Aaron Courage 1st = Sharons Casino Hat-Trick S3J	79 points
Ariel Courage 1st = Sharons NSD Obelia S2J	79 points

Overall Production Winner

Annabel Jeyes	Manor Chrome Delta	100.0 Production points
---------------	--------------------	-------------------------

Overall Winner

Thomas Jeyes	Manor Buzbox Athena	174.35 Production points
--------------	---------------------	--------------------------

Look out for entries opening soon for the 2024/25 competition

Youth Awards

Holley Geck Memorial Junior Showing Award

Archer Scherer	Sherborne Kama Dash
----------------	---------------------

Marcus Trotter Award

Annabel Jeyes

All Breeds Youth Camp

Paramount Cup - Riley Taylor

Riley Taylor won the Paramount cup and was the most outstanding JerseyNZ member at the Holstein Friesian led National All Dairy Breeds Youth Camp.

Riley also did an outstanding job at showing off his leadership skills towards the youth at the camp.

Other JerseyNZ members attending the camp included Chloe Sargent, Izzy Edge, Nerida Bateup and Arya Taylor plus several other participants from Jersey farms.



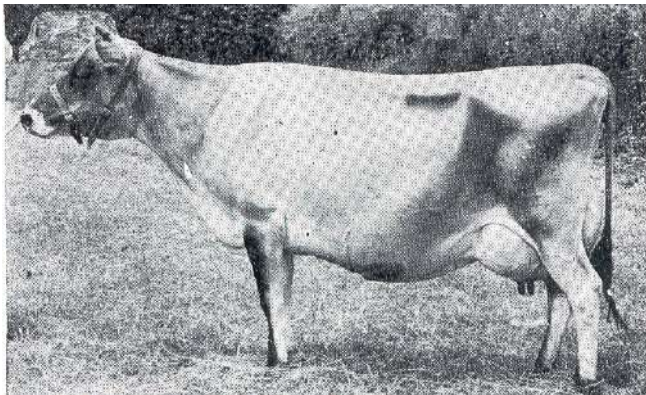
Five finalists were named in April in the 2024 Jersey NZ Hall of Fame judged by members Cliff Shearer, Tony Luckin and Robert Hall. Two of these famed cows were inducted into the Jersey NZ Hall of Fame at the Annual Conference on 16 May 2024.

Finalists – nominated by

- Tironui Integ Meg – nominated by Murray & Janet Gibb
- Kevilor Sameen – nominated by Barry Montgomery
- Oaklea Golden Faith – nominated by Don Shaw
- Cardrona Fjord Bethany – nominated by Peter Allison
- Big Hollow Omens Beauty – nominated by Barry Montgomery

Members nominated registered cows, alive or dead, for a variety of reasons including indexes; outstanding progeny; high production; On Farm results; show results; great cow families; and any other accomplishments worthy of consideration.

JerseyNZ is delighted to announce that the 2024 inductees into the JerseyNZ Hall of fame are:



Kevilor Sameen

Kevilor Sameen – nominated by Barry Montgomery

At the Big Hollow Annual Sale in late May of 1956, a yearling bull by the name of Big Hollow Blue Sam was purchased by the Mossop family of Waharoa, stud-masters of the well known Tarnhowe Stud. The meagre purchase price of fifty guineas proved to be the greatest investment the Mossop family ever made.

Big Hollow Blue Sam went on to leave a legacy of outstanding cattle, that established Tarnhowe as a top breed nursery for many decades. The dam of this bull was an Abbeville Good Omen daughter, by the name of Kevilor Sameen VHC, CP, SD, Elite Merit. His sire was Big Hollow Blue Peter, a son of the outstanding cow in Big Hollow Omens Beauty and sired by Glamorgan Sonny Boy. With the passage of time and the knowledge we now have of the breeding power of his dam and paternal granddam, Big Hollow Blue Sam’s success was assured.

Kevilor Sameen’s dam, Abbeville Dinah’s Elsie VHC, had been sold at the 1949 Big Hollow Annual Sale for the sale’s top price. Purchased by Mr E K Hames of the Papanoa-Ruawai area, neighboring the Matakohē, Big Hollow Stud of Mr Ned Sterling, she was in-calf to Abbeville Good Omen. When Mr Sterling saw the resultant heifer, he immediately set his mind on purchasing her. Of pure Big Hollow breeding, this is the reason she carries the Kevilor prefix of Mr E K Hames.

The Big Hollow Studmaster considered Kevilor Sameen and Big Hollow Omens Beauty as the two best uddered and his favourite daughters of Abbeville Good Omen. Kevilor Sameen very quickly established herself as an outstanding brood cow.

She produced Four Merit Sire Sons:

- Big Hollow Blue Sam – Merit Sire at Tarnhowe
- Big Hollow Superior Sam – Merit Sire, by Glenmore Achievement at A Thompson – Stratford
- Big Hollow Regal Sam – Merit Sire, by Big Hollow Regal Hermitage – son of big Hollow Omens Beauty
- Big Hollow Dreaming Major – Merit Sire at Big Hollow
- Big Hollow Gold Sam sold to Mr Don McIntosh ‘Whariti’ Jerseys Woodville

She was dam to two Excellent classified daughters:

- Big Hollow Royal Dinah Excellent
- Big Hollow Stylish Sue Excellent, CP

Both of these daughters provided outstanding sons to the Jersey breed.

At the 1967 Big Hollow Dispersal Sale, in the auctioneers footnote to Big Hollow Dreaming Major there was written, and I quote; "Dreaming Major is perhaps the greatest breeding bull ever used in the stud, his daughters being ideal dairy cows of lovely type and have very good udders and teat placement, while his sons give every indication of breeding particularly well. His dam Kevilor Sameen has proved to be a 'wonder' cow and without doubt, one of the greatest influences for good in the Jersey Breed at the present time" end of quote.

The reference in the above quote to the impending impact Big Hollow Dreaming Major's son's could have on the breed proved well founded. Many went on to achieve great impact in the herds they served. One I had first hand knowledge of was Big Hollow Bohemian. From the Big Hollow Omen's Bell family (Omen's Beauty's full sister) he bred superbly at Rivermere, Primley and Grandeur studs with many of his sons carrying this powerful blood to Jersey herds all over the country.

The influence this one cow, Kevilor Sameen had for the betterment of the Jersey breed for at least two decades or longer was at the time, unparalleled in this country. One wonders what she might have achieved, had her breeder had the access to modern embryo and flushing technology. Her impact on the Big Hollow stud itself allowed this breed nursery to maintain and continue it's value to the Jersey national herd for many years after it's dispersal.



Cardrona Fjord Bethany at 10 Years

Cardrona Fjord Bethany – nominated by Peter Allison

Bethany is the "B" family Matriarch at Bonacord, leaving elite type, production and extreme index progeny in our herd and the AI industry. Best production at 11 years, 7082 litres, 698 kg ms. Won two Otago all Breeds Dairy Cow Championship (points at 3 shows) at 10 + 11 Years Reserve Champion South Island Jersey at Otago/Taiieri show plus a lot of Type and Production awards, breed and all breeds awards as well over the years. It is as a breeding cow she excels. 7 Daughters, 5 Sons (no ET work). Her fourth generation son, 323041 Bonacord Brisbane Barric BW 482 is the latest of nine in a line of AI Bulls from this family.

701	2nd Generation	BW 465/70	PW 737/90	
703	3rd Generation	BW 516/64	PW 656/71	
11	2nd Generation (9yrs)	BW 475/65	PW 759/91	
21	3rd Generation	BW 465/64	PW 499/90	
8	4th Generation	BW 473/61	PW 728/70	
502	3rd Generation	BW 501/64	PW 645/86	
307	3rd Generation	BW 423/47	PW 768/84	Classified 9.82 Years
500	1st Generation	BW 489	PW 600/90	
76	4th Generation	BW 528/50	PW 811/54	2 Years
202	3rd Generation	BW 372/54	PW 379/87	

Only some of cows there are plenty more

23 Born Calves

23-58	5th Generation	BW 462	PW 410
23-57	5th Generation	BW 508	PW 448
23-56	5th Generation	BW 414	PW 369
23-55	4th Generation	BW 454	PW 393

These are only some of 2023 Calves

Bonacord CM Bojangles 32009 BW 456/90 - Died as a young sire at LIC must have had enough daughters for survey.

New Sire – Bonacord Brisbane Barric – 323041 BW 482

The indexes just keep on keeping on, this coming season there will be more 5th generation calves arriving, the next season there will be 6th generation calves, cant wait, they are just so reliable.

BW 150/49, PW 10/76, Ancestry 98% Herd figures 580-600 cows.

50% Jersey, 50% Ayrshire and Crosses = Production av 450 – 470 KgsMS.

So this Jersey Family are extreme, indexes and production a great, great family. The day I brought Bethany was a red letter day at Bonacord

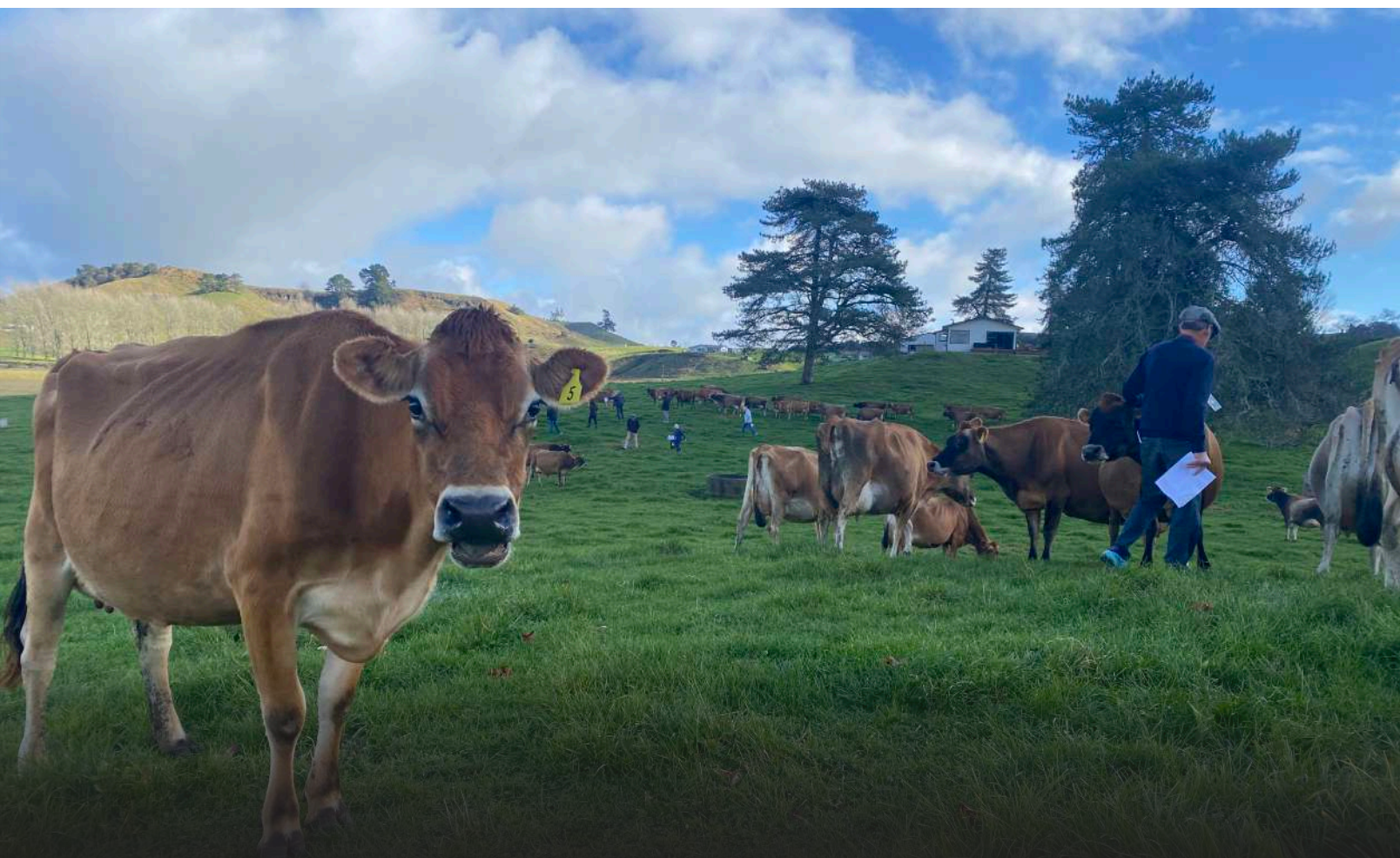


Photo taken at A'Charnaich Jerseys

THE **FUTURE** **IS GOLDEN**

Jersey NZ Annual Conference 2024

Rotorua, 14-16 May 2024

Article written by Jackie Kennedy

The JerseyNZ Annual Conference recently brought together breeders, and industry experts for a three-day event in Rotorua, showcasing some of the best Jersey cattle farming and fostering a vibrant community spirit. The conference offered attendees a comprehensive experience, combining professional development with social engagement.

The conference kicked off on Tuesday afternoon, with registrations beginning at 3pm, followed by drinks and a welcoming dinner sponsored by Quadrant Farming Solutions. Attendees gathered at the Novotel Lakeside and heard from special guest for the evening, Hon. Todd McClay, MP for Rotorua and Minister of Agriculture, who spoke about the Government's commitment to supporting the dairy industry.

Following the dinner, attendees were treated to a cultural performance from the Matariki Cultural Group, offering a unique glimpse into the heritage and traditions of the Rotorua region. The performance not only entertained by encouraging some willing participants up on stage to perform a haka, but also highlighted the deep connection to Rotorua's heritage.

The second day of the conference began with a series of presentations focusing on key industry topics. The team from

Jersey Advantage gave an update on their latest events and the benefits of farming the Jersey cow. JerseyNZ General Manager Pam Goodin presented updates on the JerseyGenome™ and Jersey Future programmes which celebrated the success of both initiatives.

A highlight of the morning session was our keynote speaker, Mea Motu, the IBO World Super Bantamweight Champion. Motu's inspiring speech emphasised the resilience needed to make it through tough times and how she found the strength to fight through some big challenges in life. An advocate for mental health, Mea was an inspiration and emphasised the fact that it's ok to not be ok and that greatness is right in front of you if you put your mind to it.

After lunch, attendees had some free time to relax before heading to the Agrodome for an afternoon of interactive activities. The Agrodome farm show was a crowd-pleaser, demonstrating sheep shearing, cow milking, and other farm skills, providing both entertainment and education. Colin Hickey very slowly fed a lamb and Pam Goodin successfully handmilked a Jersey cow and has the certification to prove it. Three

ducks were rounded up on stage by the farm dogs (apparently if they use sheep, they tend to fall off the stage) and much to the audience's disappointment, the Merino sheep was spared a haircut this time around.

Following the farm show, attendees enjoyed a chef demonstration and grazing table, featuring locally sourced produce and showcasing the culinary potential of Jersey milk. The evening continued with the Jersey Pride sale and the Youth Auction sale, where breeders could bid on top-quality Jersey cattle and support the next generation of farmers.

The day concluded with a dinner at the Agrodome, sponsored by LIC. The dinner provided another opportunity for attendees to network and reflect on the day's activities while enjoying a delicious meal.

The final day of the conference opened with a morning session led by Dr. Jacqueline Rowarth, a distinguished agricultural scientist. Dr. Rowarth's presentation focused on the future of dairy farming, addressing the challenges and opportunities facing the industry. Her insights set the stage for a dynamic panel discussion featuring Sam Waugh, Sara Russell, and Braydon Schroder. The panellists engaged in a robust conversation about sustainable practices, technological advancements, and strategies to ensure the longevity and prosperity of dairy farming.

Our annual Cream Can session followed, where attendees could ask questions and share their experiences in an open forum, fostering a sense of community and collaborative problem-solving.

In the afternoon, the rain cleared, and attendees visited the pristine farm of Peter and Pam Macdonald (A'Charnaich), gaining firsthand insight into the daily operations of their successful Jersey farm and breeding, along with viewing some Texas Longhorn cattle which is a hobby for Peter. The farm visit was complemented by a stop at the Redwoods by a select few, where attendees could enjoy the natural beauty of Rotorua.

The event concluded with final drinks and an awards ceremony with a 'Back to the Future' theme. Attendees celebrated the achievements and contributions of members within the JerseyNZ membership. The closing dinner provided a festive end to the conference, with attendees celebrating on the dance floor, sharing their experiences and looking forward to the future with renewed enthusiasm.

It was a pleasure to share this year's Conference with Jersey Australia directors, Lisa Broad and Con Glennen.

Our Organising Committee for the 2024 Annual Conference included Pam Goodin, Jackie Kennedy, Alison Gibb, Ross Riddell, Glenys Ellison and Maurice Pedley. Our thanks go to these members for assisting with the planning process and offering their ideas and suggestions. Thanks also to the JerseyNZ office team; Michelle Calcott for her help during the Conference and Sean Bresnahan and Alayna Judge for their contribution leading up to and assisting on the final night.

Thank you to Peter and Pam Macdonald for hosting us on the Thursday afternoon during a very busy week for them leading up to their son's wedding. It was a pleasure to view your farm and thank you for sharing your passion for farming Jerseys.

And finally, our Conference would not be possible without the generous support of our sponsors. We warmly thank them for their contribution and for those who attended. We ask members to support these companies where they can.



2025's Conference location is yet to be determined but watch this space for more information.







10



11 12



15



13 14



16



17



jersey^{NZ}

**Annual Conference 2024
GALLERY**

THE FUTURE IS GOLDEN

- 1.) Winners of the best dressed at the 'Back to the Future' themed dinner – Robert Hall (winner) and Daniel & Freya Lynch (runners-up)
- 2.) Farm visit to Peter & Pam Macdonald's A'Charnaich stud
- 3.) Ray Colebrook and Sally Elson celebrate on the final night
- 4.) Julie Pirie, Hayden Bishop and Paul & Christine Frecklington at the Awards
- 5.) Farm visit to Peter & Pam Macdonald's A'Charnaich stud
- 6.) Youth auction items at the Agrodome as part of the Jersey Pride sale
- 7.) The discussion panel consisted of Braydon Schroder, Sara Russell and Sam Waugh – moderated by Dr. Jacqueline Rowarth
- 8.) General Manager Pam Goodin successfully handmilked this very placid Jersey cow at the Agrodome – a first time experience for her!
- 9.) Farm visit to Peter & Pam Macdonald's A'Charnaich stud
- 10.) Cultural Performance by Matariki Cultural Group on the opening night
- 11.) Demonstration of the sheep dogs running across the backs of sheep at the agridome
- 12.) A very inspirational talk from Mea Motu (IBO World Super Bantamweight Champion)
- 13.) Jenna O'Sullivan (CRV) and Colin Hickey on lamb-feeding duty
- 14.) JerseyNZ team dressed up for 'Back to the Future' – Michelle Calcott, Sean Bresnahan, Alayna Judge & Jackie Kennedy
- 15.) Texas Longhorns at the property of Peter and Pam Macdonald
- 16.) Farm visit to Peter & Pam Macdonald's A'Charnaich stud
- 17.) Attendees gather at Macdonald's farm

Special Awards 2024



Cyril Dermer Cup

Alison Gibb

Outstanding services to the Jersey breed and JerseyNZ

Alison has been a determined and dedicated champion of the Jersey Breed, not only in her own farming business, but within her community, nationally and internationally.

Alison has been the driving force in the Lower Waikato Jersey Club, ensuring it is a thriving club, with plenty of activities organised on a monthly basis.

She joined the JerseyNZ board in 2016, being elected as President, and as reported in the Farmers Weekly in June 2016, she certainly helped lead the board to develop a strategy underpinning the JerseyNZ business model and delivering growth and sustainability.

In 2008 Alison and Russell attended their first World Conference trip, since then Alison has contributed to the World Jersey Cattle Bureau. She has been Treasurer of the Bureau and is currently the Vice President of Oceania.

Alison's other passion is to lift understanding of leadership and governance. The JerseyNZ Governance Development programme is enabling young people to learn and experience governance in a safe environment. There are limited opportunities to develop these skills, and JerseyNZ members should be proud of the work that Alison has done in developing future leaders.

The award is to recognise the efforts over the preceding 12 months, Alison gives to the Jersey breed every day certainly far more than the last 12 months, so this award is deserved many years over, and I'm sure Alison isn't prepared to stop just yet.



Mr & Mrs J W Singers

Efficiency Scroll

Steve Ireland

Presented to the person who has done the most or been the most active in promoting & publicising the Jersey breed and the Association. The award covers all phases of a breeder's activities including testing, showing, breed promotion and administration.

A third generation Jersey breeder, Steve is passionate about genetics and takes the view that the changing dairy industry landscape presents many opportunities, rather than threats for the Jersey breed.

Over more than 25 years Steve and his wife Nina, and the Lynbrook stud has bred over 140 Jersey bulls, many of which have progressed into the LIC Premier Sires teams or CRV or Samen bull teams. The most well-known Lynbrook Terrific ET S3J has produced over 30,800 daughters, and was inducted into the LIC bull Hall of Fame in 2018

Steve joined the JerseyNZ Board in 2015, and took on the role of Genetics committee convenor. Around that time JerseyNZ and LIC collaborated to form Jersey Future, a joint sire proving programme which continues to successfully supply young genomic bulls for the benefit of JerseyNZ members. The success of Jersey Future continues, and in 2024 five bulls are included in either the LIC Jersey Forward Pack or Sexed teams, with a further three bulls available through nominated. Steve continues as convenor of the Genetics committee, even though he is no longer on the JerseyNZ Board.

Steve continues to evolve his breeding programmes by using a small amount of overseas Danish and US semen, and has more recently used polled bulls, to diversify his breeding objectives.

Steve is actively involved with the Farmer Advisory Panel for NZAEL, a group of invited farmers which was formed out of the original NZAEL user group. This panel advises the NZAEL Board with information relating to the make-up of BW, and helps provide a strong farmer input to any changes to BW and the underlying BVs, which will continue to have a profound influence on the profitability of all New Zealand's dairy farmers.

Based on Steve's knowledge, expertise and passion for the Jersey cow, the JerseyNZ Board have no hesitation in presenting this award.

Matriarch Genetics Update

by Warren Berry

With Matriarch Genetics now firmly entrenched in the genetics game, we are now releasing our 4th year of bulls and are eagerly awaiting the progeny of our 1st year's bulls to calve in the spring of 2024 (albeit with low numbers of daughters due to ABS semen issues). We have 6 bulls on offer this season, the first two by Global Bounty Reward from the Little River stud (home of Trident, Nucleus, and Samurai). Little River GBR Jimmy is a higher liveweight Jersey from the well-performing Hillstar Joybell family. Little River GBR Tracker is a high fertility bull from the same cow family as Trident.

For the polled enthusiast we have Riverina Wonderboy P, a heterozygous son of the popular Australian bull Wallacedale Goldband P out of a very strong Floyd cow.

Also, from the Riverina stud we have Riverina Ulysses, a Crescent Leo Dominator son from an outstanding Crescent Kenya Bounty cow.

For the BW chasers, we have Cawdor Cato Augustus from one of the highest BW/PW herds in the country, with numerous bulls in use in New Zealand.

To finish with we have Riverina Houston, a Spring Creek Stoney son out of a Terrific cow from the "H" family at Okura, he has an udder overall MGBV of +1.1.

So, there is a bull for everyone no matter what you are breeding for – Size, Udders, Fertility, outcross, polled, BW all from commercial herds and deep cow families. With



Photo: Houston Dam – 6 Years

generations of herd testing, weighing and TOP. Semen is available through STgenetics for non MGL members.

Matriarch Genetics continues to advocate for bull breeders and the industry good. Over the past year we have supported NZAEL in its journey to create better BW, and we have represented bull breeders in discussions with the Independent Working Group.

Along with many JerseyNZ members we look forward to seeing early "industry good" genomic values in the very near future.

If you would like to learn more about becoming a Matriarch Genetics shareholder member contact us at info@matriarch.co.nz.



Tracker Dam - 2 Years

Jersey Advantage Update

Rachel Haskew



Jersey Advantage is pleased to contribute to the Jersey Focus Magazine again and give JerseyNZ Members an update on the breed advocacy and promotion work our Action Group and Trust Board are doing. Our strategy this season is to have a greater impact through our work program, greater impact in the industry meetings we're involved in, greater impact in any events that we run or support and greater impact in the marketing and promotion of the Jersey breed. We're leaning into the challenges and look forward to the season ahead.

From The Commercial Influence Committee

Industry Working Group for Genetic Gain

The Commercial Influence team has spent much of their time during the past few months taking every opportunity to engage with the Genetics Industry Working Group. James Courtman and Roger Ellison met with two of the Group in Hamilton and Philip Brewster was also able to meet with them earlier that day as part of Matriarch Genetics Limited. The NZAEL Farmer Advisory Panel also met with the Group via zoom call and James Courtman was part of this group.

There's been a thorough consultation process with multiple stakeholders, and we feel every aspect of the challenges and opportunities to make the changes needed have been discussed. It's Jersey Advantage's opinion the group now has a strong understanding of the issues and challenges put forward to them, we're hopeful they present some solutions that will allow NZs dairy industry to become a world leader in genetic gain once again. This is vitally important as we face an exporter world demanding climate efficient products and the pool of pasture fed genetics elsewhere in the world is very limited. We now await the Group's recommendations and look forward to reading their report due out towards the end of May.

On the BW front, NZAEL is on track to include genomics in their platform by the end of 2024. Jersey Advantage is advocating to see some further improvements in the BW model particularly around feed costs. We currently believe the BW model is fully capturing the production income of bulls via fat, protein and meat but still underestimating the feed costs associated with production of these traits.

Milk Pricing - Volume Charge and Lactose Payment

Jersey Advantage has for 3 years been lobbying Fonterra to reinstate the capital cost component of volume charge i.e. include the cost of replacing tankers and vats into volume charge and we are pleased to share this matter has been resolved. If you're a Fonterra supplier, keep an eye on the communications from the Coop and the 24/25 Terms of Supply Agreement as this has a material impact on your milk income. We anticipate the new VCR type payment could be worth at least 2-3c per kg MS to farmers supplying Jersey milk at a %MS greater than the Coop average for the season. For a farm producing 100,000 kg MS this adds \$2000-\$3000 to milk

income. In a world where we hear lots of chat around carbon and efficiency it is appropriate to support farmers who provide an energy efficient product.

Milkfat plays the key role in NZ dairy farmers income currently, with butter at US\$6593/t and SMP at US\$2551, the spot value of fat is about 1.6 x the value of protein. VCR plus the reality that the industry produces 1.3kgs fat for every 1.0kg of protein, means that fat on the current spot rate is providing about 70% of our milk cheque.

Jersey Advantage has been approached to provide feedback to Fonterra on a proposed payment for lactose as part of the wider milk price review. Whilst there may be a justification for paying farmers for lactose, there's also a case for recognising casein protein versus whey protein and high value fats that go into food service and escape the VCR. On balance Fonterra should deal with all these components or none of them.

As Fonterra are moving away from a dominance on whole milk powder in their product mix, the requirement to import lactose will disappear by 2029. If you look at the energy cost to produce lactose plus the cost to process it, the international price never gets to that level. Last year Fonterra made a \$1.6 billion profit, of which \$1.3b was a product mix outside the standard basket of products i.e. cheese being worth more than powders and casein also being worth more. When casein was high in value, it demonstrated the difference in value between casein protein and whey protein, which is important for Jersey. Overall, if Fonterra end up with no lactose payment and the volume charge reinstated, Jersey milk is in good shape from a milk pricing point of view.

Bull Intakes

We continue our ongoing engagement with breed companies and over the coming months plan to meet with LIC and CRV as part of this. The further reduction of bull team intakes continues to disappoint us, with both companies down to 25 Jersey bulls to be proven from the 24-code intake and the Jersey Future Program hoping to prove an additional 7-8 bulls as part of the LIC intake. This is not an ideal situation for Jersey farmers or breeders, and we continue to put pressure on breed companies to do their bit in shifting the dial for Jersey. Jersey is currently sitting at 7% of the national herd and there will need to be a collective industry wide effort to lift this percentage.

It's critical the industry work together to improve the situation for Jersey as Jersey genetics offer too much value in terms of grass conversion efficiency, carbon efficiency and profitability. We simply can't afford for

these genetics to be lost, rather we need to see a resurgence of Jersey and a browning of the national herd to meet the carbon emissions target expected of us by our international customers. On a positive note, whilst in recent years the number of Jersey cows has diminished, total Jersey genetics is increasing through more crossbreeding and a higher proportion of Jersey genes within crossbreed cows.

Welcome to Ben King



Ben King and along with wife Allie and their son Lincoln, 50:50 sharemilk 650 cows in Canterbury. Ben has been in the dairy industry for the past 9 seasons, and prior to farming himself was working as a livestock agent in the North Island. Ben has a huge passion for livestock, breeding and genetics and takes a lot of time and care when nominating their herd during mating. Ben takes a keen interest in all genetics but has a fondness for Jersey cows and the efficiencies they bring to farming. Ensuring we are breeding the cow for the future, that is capacious, efficient at feed conversion, sustainable and profitable is important to Ben, and he works alongside many breeding companies here in New Zealand and overseas when it comes to breeding their herd. Ben looks forward to sharing his passion, knowledge and experiences with Jersey Advantage and the wider dairy industry. Ben has joined the Commercial Influence Committee for Jersey Advantage.

From The Environment Committee

A New Year brings a New Chair

Earlier this year, Roger Ellison announced his desire to step back as the Environment Chair role and to move into a support role for the committee team. Roger has been an excellent chair since the formation of Jersey Advantage and will continue to guide and influence the work of the committee, attend industry meetings and be a voice for Jersey. We'd like to thank Roger for his time as Environment Committee Chair and look forward to working with him in a support capacity. Rachel Short (Shortland Farms, Taranaki) is taking over the reins and brings a depth of knowledge and understanding about the benefits of Jersey and the environmental challenges ahead for the dairy industry.

A New Year brings a New Chair

Earlier this year, Roger Ellison announced his desire to step back as the Environment Chair role and to move into a support

role for the committee team. Roger has been an excellent chair since the formation of Jersey Advantage and will continue to guide and influence the work of the committee, attend industry meetings and be a voice for Jersey. We'd like to thank Roger for his time as Environment Committee Chair and look forward to working with him in a support capacity. Rachel Short (Shortland Farms, Taranaki) is taking over the reins and brings a depth of knowledge and understanding about the benefits of Jersey and the environmental challenges ahead for the dairy industry.

Live Weight and Carbon Emissions - Farming a lighter cow!

Carbon emissions and carbon intensity targets are very much at the forefront of many industry conversations for the Environment Committee. Recent communications with Fonterra are very positive when discussing the advantage of a smaller breed vs Fonterra's generic liveweight of every cow weighing 480 kg in the current Farm Insight Reports. Jersey Advantage is looking forward to seeing how Fonterra moves forward in recognising breed in these reports.

Dairy Beef

The Environment Committee had the pleasure of meeting with Professor Rebecca Hickson from Focus Genetics who leads the Pamu Beef Programme. Rebecca's work in researching economic solutions for dairy beef and non-replacement calves found one of the opportunities to be Jersey beef. The trials Rebecca has been involved in showed Jersey cross beef animals are typically the same size for the first year and mature earlier. This creates potential for reaching slaughter before their second winter. There are also good bulls in every breed and focusing on sire performance, irrespective of breed, is key to producing a good dairy beef cross.

Rebecca sees potential in separate index for trading the four-day old calf, measuring what the rearing potential is of that calf which would benefit Jersey beef i.e. having data on the beef sire and Jersey dam. Currently calf rearers buy calves on how they look in the sale pen and prefer specific markings. By choosing a single-coloured beef breed like Angus or Charolais and the opportunities with rearing these breeds provide an advantage and are proving to be the pick of the Jersey beef breeds.

Non-replacement Calves

The issue of NZ's nearly 2 million non-replacement calves continues to bubble away behind closed doors and our ability to have an influence in this space is determined by being able to build relationships with key industry players. Those that are investigating future opportunities are building capacity within their teams to drive change. We have good connection and ongoing conversations with DairyNZ and Fonterra and another round of discussions between the Environment

Committee and Fonterra’s Dairy Beef Programme Director is due in May. It’s important that we stay across what Fonterra has been doing in the non-replacement calf space over the past 12 months and discuss work on options for Jersey beef and potential future opportunities.

Non-replacement calves are not a breed specific issue, it’s an issue for all farmers and all breeds and there are plenty of examples of Jersey farmers successfully producing quality Jersey beef for the market and reducing non-replacement calf numbers on their individual farms.

Jersey Advantage has been working with DairyNZ to put together a case study with Ben and Allie King (Canterbury based sharemilkers, 650 Jersey/Jersey cross herd) to showcase what they are doing within their farm system to reduce the non-replacement calf numbers. This case study will be available on the DairyNZ website alongside Owl Farm, Pamu and Craigmore and will complement these existing case studies by looking at opportunities and challenges for an individual farming business with different considerations to the large corporate and research farm models.

Are you passionate about the Jersey Breed, come and join our committees!

We’re looking for passionate, committed people to join our committees. The time commitment is manageable with your on-farm commitments as we have monthly Zoom meetings and attendance at industry meetings for some of the team. If you’re interested in getting involved, get in touch with Rachel, rachel@jerseyadvantage.co.nz

Efficient Dairying Dinner – Tuesday 7th May, Hamilton

Jersey Advantage hosted an Efficient Dairying Dinner in Hamilton before LIC Breeders Day. We had a highly engaged group of Farmers and Industry Leaders who came together to talk about efficient dairying for the future and the critical role genetics must play. Special thanks to our dinner speakers Mark Townshend, Co-chair of Jersey Advantage and John Roche, Chief Science Adviser for MPI, who shared their thoughts, insights and challenged our thinking. Thanks also to Luke Beehre, Co-chair of Jersey Advantage for MCing the evening.



Thanks to Dannevirke Jersey Club

We’d like to acknowledge and thank the Dannevirke Jersey Club for a generous donation to Jersey Advantages work

program. Donations from Jersey farmers are an important revenue stream for us and allows us to continue much needed advocacy and promotional work on behalf of the breed.



Jersey Advantage Funding Model and Growth Options

For Jersey Advantage to carry out its activities and be able to deal on the same level as Dairy NZ, MPI, Fonterra, LIC etc, a reliable source of funding is necessary. We operate at a sub-par level without appropriate funding. Jersey Advantage needs to keep thinking about growth options and could consider a range of property deals. This could be done independently or as a joint venture with Jersey NZ. If you’re interested in jointly investing, supporting JA and have some ideas and want to have a conversation, please get in touch.

Jerseyland Farms Limited

The purchase of the 215 ha, 550 cow dairy farm at Makarewa in Southland has been a great success. It provides a financial lifeline for Jersey Advantage and a new and valuable income source for Jersey NZ. The five private investors (Bailey, Bockock, Colebrook, Dobson, and Gibson families) have procured good investments themselves, but it should also be noted each family made a generous donation to Jersey Advantage to allow the project to proceed.

The next stage for Jerseyland Farms to consider is whether the 240,000 kg MS farm model is replicated to a 500,000 kg MS model. Such a project should deliver \$1m annually for stakeholder and distribution and/or bank amortisation. Jersey Advantage viewpoint on growing the Jerseyland Farms model is likely to be positive.

Donations and Bequeaths

For those lifelong Jersey farmers who have enjoyed the Jersey experience, and banked the financial benefits of Jerseys, next time you update your wills and expression of intent in how you would like your estate managed, please consider whether a bequeath to Jersey Advantage has merit. You may stipulate to Jersey Advantage Trustees the funds are gifted for Jersey Advantage farm investment, research or for scholarships for people development.

Trustees of Jersey Advantage – Mark Townshend (Co-Chair), Luke Beehre (Co-Chair), John Bailey, Rodney Dobson, Glenys Ellison, Evan Smeath.

RAS List



Profitability. Sustainability. Competitiveness.

The latest Animal Evaluation run took place on **17 May 2024**

RAS AVERAGE (TOP 30 JERSEY BULLS)		BW(\$)	Prot(kg)	Fat(kg)	Milk(L)	Lwt(kg)	Fert(%)	SC (Score)	Func Surv (%)	BCS	Marketer
1	GLEN KAYCEE SHERLOCK JG 320503 JER	603 / 87	34.0	59.5	222	-26.5	4.0	-0.10	3.3	0.00	CRV
2	SHELBY INTEG LABYRINTH ET 318032 JER	596 / 92	20.9	56.0	-121	-38.2	5.5	-0.72	3.8	0.11	LIC
3	GLANTON DESI BANFF 318021 JER	554 / 98	18.0	49.3	-564	-30.0	3.0	-0.63	2.7	0.07	LIC
4	TIRONUI GB MONTAGE-ET 319066 JER	554 / 91	27.0	53.6	28	-28.0	3.4	-0.18	1.7	0.13	LIC, JerseyNZ
5	OKURA PEPPER LUCCA 318001 JER	550 / 90	23.3	61.5	18	-27.6	2.4	-0.35	2.3	0.02	LIC
6	ROCKLAND LQ BERKLY 320029 JER	543 / 91	26.5	58.6	-85	-23.0	2.4	-0.11	3.1	-0.14	LIC
7	LOCKHART OI JOEL JC15 317052 JER	520 / 90	14.7	48.6	-239	-66.9	5.7	0.05	0.9	0.00	LIC
8	LITTLE RIVER OI SAMURAI 318066 JER	519 / 91	19.6	43.1	-193	-63.7	5.2	0.37	2.7	0.11	LIC, JerseyNZ
9	TIRONUI SUPERMAN ET 318009 JER	516 / 98	24.3	53.5	-125	-35.2	1.3	-0.02	0.3	-0.12	LIC
10	GLENUI SUPER LARKIN ET 318020 JER	508 / 89	28.4	44.6	225	-33.8	4.6	-0.41	3.6	-0.06	LIC
11	CAREYS CM LEXICON S2J 319035 JER	508 / 91	12.7	44.6	-554	-11.4	9.0	0.01	3.8	0.21	LIC
12	ELLISON INTEGRITY KAKA 319603 JER	506 / 92	23.6	37.0	168	-23.1	8.6	-0.42	3.1	0.22	CRV
13	LITTLE RIVER NUCLEUS S3J 317513 JER	506 / 97	21.3	36.4	6	-49.0	9.4	-0.56	1.9	-0.02	CRV
14	NO BULL CARRICK CHARNOCK 320541 JER	505 / 80	24.4	50.4	135	-9.6	5.5	-0.08	3.2	0.16	CRV
15	TIRONUI PKC MEGABYTE 319600 JER	504 / 88	19.0	43.7	28	-24.0	8.0	-0.69	2.2	0.17	CRV
16	GLENUI BT LIBERATION-ET 319019 JER	499 / 98	27.6	45.8	99	-16.1	3.9	-0.36	0.9	0.02	LIC
17	SHELBY HOSS LATITUDE 320035 JER	497 / 91	23.6	44.5	-142	-38.7	7.5	0.35	1.5	-0.06	LIC
18	GLENUI DEGREE HOSS ET 315045 JER	494 / 99	13.0	36.0	-381	-48.3	8.1	-0.52	3.4	0.11	LIC
19	ARKAN BT ZAMBEZI S3J 319009 JER	490 / 96	23.8	38.7	-178	-71.7	6.8	0.28	-1.4	-0.11	LIC
20	CRESCENT I FIRELIGHTER ET 318509 JER	485 / 88	12.3	35.8	-436	-68.4	4.4	-0.16	1.9	0.22	CRV
21	CLUAIN PRESELY MONDALE 318508 JER	484 / 89	16.8	32.8	72	-56.5	7.7	-0.84	3.4	-0.01	CRV
22	CAREYS CM LATTITUDE 320002 JER	484 / 88	16.4	47.1	-228	-56.7	1.3	-0.13	2.8	-0.02	LIC
23	LITTLE RIVER TRIDENT S3J 317061 JER	482 / 84	19.7	35.2	89	-47.3	11.2	-0.33	1.5	0.14	LIC
24	FOXTON GL CELESTIAL 320034 JER	480 / 90	21.9	45.8	227	-51.2	5.3	-0.01	3.4	0.01	LIC
25	OKURA LT INTEGRITY 311013 JER	475 / 99	14.2	38.9	-143	-52.6	4.2	-0.07	3.5	0.18	LIC
26	MAXWELL GOLDIE MATAI S2J 317025 JER	473 / 96	16.8	38.3	-7	-75.4	3.6	-0.43	-0.2	-0.08	LIC
27	EVLEEN INTEGRITY LARSON 313047 JER	463 / 98	31.1	44.8	355	-26.4	2.7	-0.20	2.0	0.09	LIC
28	SHELBY SS LORENZO S3J 317049 JER	462 / 96	11.5	23.9	-319	-55.3	10.3	-0.53	1.4	0.22	LIC
29	FYNREATH CARRICK CRYPTIC 320500 JER	462 / 75	19.3	45.1	95	-56.9	4.7	-0.11	2.2	-0.17	CRV
30	TIRONUI LT BESIEGE ET 316009 JER	461 / 98	15.6	25.4	-351	-70.0	5.5	-0.22	3.6	0.06	LIC

JerseyGenome™



Elite heifer programme to identify potential bull mothers

What is JerseyGenome™?

- A programme to identify and acknowledge the best pedigree Jersey breeding heifers in New Zealand.
- A joint venture to identify potential bull mothers for Jersey NZ & CRV Ambreed, to generate sires that will enhance the future of the Jersey breed.



Keep up to date with JerseyGenome™ at: www.jersey.org.nz/jersey-genome

2024 Team JerseyGenome™ Update

The 2024 team will be announced shortly, with the first lot of selections due back later in June. We had an overwhelming response to the latest request for DNA samples with over 500 samples sent off in total, to GenomNZ. All members who submitted a DNA sample will be contacted with results.

2023 Team JerseyGenome™ Update

2023 JerseyGenome Testing Team (2022 born)

- 101 heifers
- 27 members represented

2022 Team JerseyGenome™ Update

2021 JerseyGenome Testing Team (2021 born)

- 92 animals
- 31 members represented

JerseyGenome™ Selection - new process

JerseyNZ and CRV collaboration (nothing required from members)

- Instead of requesting members to register their animals before February, JerseyNZ have worked collaboratively with CRV to identify animals that are J16 in JerseyNZ member herds and these animals will automatically be considered for selection into the JerseyGenome™ programme once genomic results are received.
- In 2024, we also isolated registered heifers post the February AE run for further targeted consideration
- Nominations are still invited and are encouraged from members

JerseyGenome™ Bull Progeny Selected

Team Year (Born)	Bull progeny selected
2019 (2018)	4
2020 (2019)	4
2021 (2020)	7
2022 (2021)	5
2023 (2022)	4
2024 (2023)	10

Glen Kaycee Sherlock JG

We celebrate the success of Glen Kaycee Sherlock JG, a CRV Jersey bull bred by the Tucker family from Northland. Sherlock remains at the top of the Ranking of Active Sires (RAS) list as at May 2024. Sherlock also won the JT Thwaites Sire of the Season Award. See page 14 for the full article on Sherlock.

HOLSTEINFRIESIAN NZ

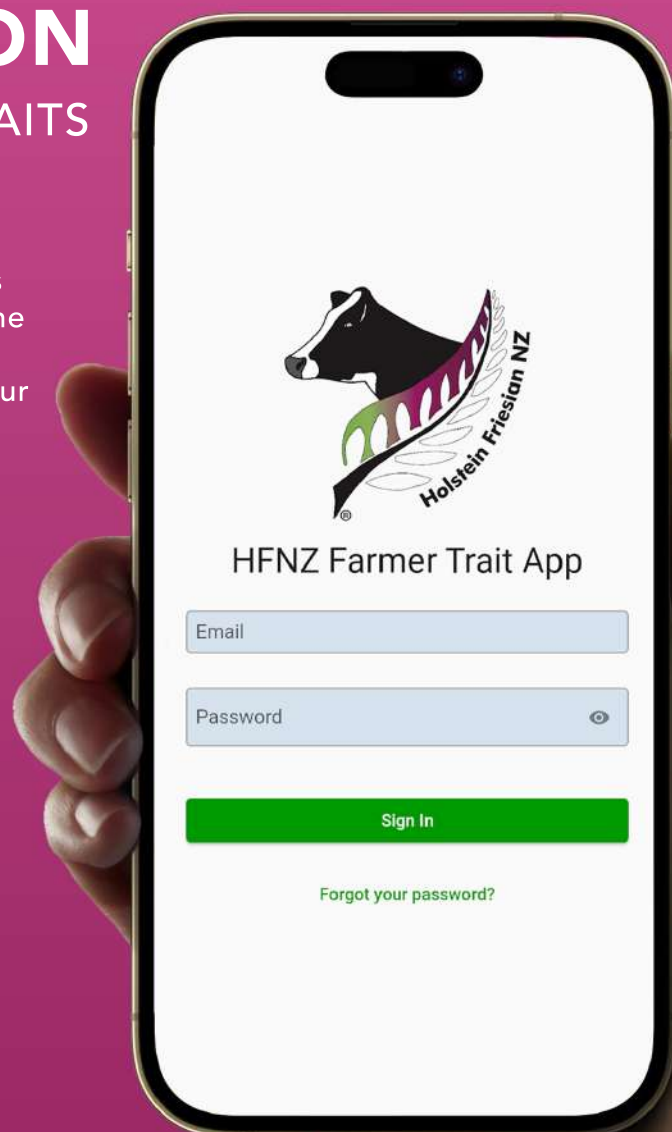
HFNZ FARMER TRAIT APPLICATION

MAKE USE OF THE FARMER TRAITS APP THIS TOP SEASON!

Hosted by HFNZ, the TOP Farmer Traits application is a user-friendly app that facilitates electronic animal scoring. Accessible on both the Apple and Android stores, this app serves as a comprehensive platform to assess and enter your animals' traits effortlessly.

Seamlessly view the list of animals queued for scoring and conveniently input farmer trait evaluations using your mobile device. Easily input farmer trait data gradually and synchronize it when you've completed scoring all your animals at your own pace. You also have the option to add animals individually and jot down specific notes for each one.

Bid farewell to the hassle of using paper and embrace the convenience of the Farmer Traits app today!



For more information and for a How To guide, contact Alayna at the office info@ayrshire.org.nz or 07 856 0816. Choose the farmer trait app this season!





Tarnhowe Jerseys – A family passion for Breeding the Jersey Cow

Alayna Judge

Tarnhowe Jerseys was founded in 1937 by my great-grandparents Birkett and Lillian Mossop. Based in Papamoa, my great grandparents, along with their four children Bob, Tony, Norma and Brenda, bred a herd that not only looked good but did the work in the shed too. This was the start of a lifelong passion for the golden Jersey, that has run through five generations of the Mossop and Harris families and still exists today through my children and me.

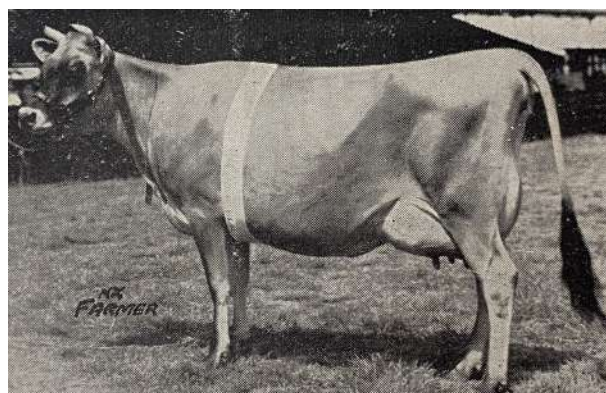
Tarnhowe was taken over by my great Uncle Tony. Tony was an outstanding studman, classifier and judge. Upon one of his classifying tours in the north, he became infatuated with a cow that would set up the Jersey breed in New Zealand. This cow of course is none other than the Crowned Cow of the Century and recent JerseyNZ Hall of Fame inductee Kevilor Sameen. Tony used a son out of this amazing breeding cow, and he never looked back.

Left to Right – Ian, Peter, Ella and Alayna holding Tarnhowe Kooks Stylish

It was this son, Big Hollow Blue Sam that produced the solid foundation of the Tarnhowe herd and major base of the Jersey cow, even today. This shows through the Crowned Sire of the Century Glanton Red Dante as his Paternal Grand sire is Tarnhowe Red Jester, the famous son out of Tarnhowe Blue Lady. There were many Big Hollow Blue Sam daughters that shone in the herd such as Tarnhowe Blue Chenille, Tarnhowe Blue Finch and Tarnhowe Blue Treasure, who were all show champions along with many others that were bred at Tarnhowe.



Tarnhowe's Trophy Haul



Tarnhowe Blue Lady

Tarnhowe had successful annual sales. Due to this success, a permanent sales pavilion was built to accommodate all of the buyers and spectators. The pavilion still stands today and is a reminder of the legacy that was the Tarnhowe herd.



Buyers admiring the animals on offer

Due to Uncle Tony's failing health, Tarnhowe was dispersed on 4 April 1972 and what an event it was, breaking several records for the time. With over 1000 people in attendance and many buyers from Australia, it was quite a grand affair. The sale pavilion was packed to the rafters with buyers and paddocks full of cars. Animals were sold to all parts of the country and a record of 20 head to Australia, which was the greatest amount for export from the same sale at the time. The top price was Tarnhowe Golden Locket for \$3,400, which roughly equates to \$25,000 today. This was a record for New Zealand at the time and she was brought by an Australian syndicate. The highest priced animal that stayed in New Zealand was Tarnhowe Merry Samatha purchased for \$3,000 by Don Ferguson, Ferdon Genetics. The record for the highest priced yearling Jersey heifer was also set that day with Tarnhowe Gold Chenelle for \$1,250. She was also sold to Australia. Tony himself purchased a few selected animals from this sale and with these few Tarnhowe cows, moved to Kerikeri for the remainder of his farming life.



Some of the many buyers inside the sale pavillion

After his health failed once more, the remaining Tarnhowe cows were then joined into the Maxwellton herd owned by my grandparents Ian and Norma Harris at Whareora, Whangarei. Both Ian and Norma showed a great commitment for the Jersey cow throughout their lifetimes. Ian was the President of Jersey New Zealand in the late 1980s and was a councillor for the World Jersey Cattle Bureau. Ian was not only a good dairyman, but he was also an outstanding businessman. It was

his love and commitment for the Jersey Cow and his drive to make her sustainable for the next generation has led to the development of the Ian Harris Memorial Heifer Competition by the JerseyNZ Youth Council. Norma, like her brother Tony, was a great judge and stud woman and had an amazing memory when it came to cow pedigrees. In 2002, she was awarded a Distinguished Members Award for her contribution to the Jersey breed. Naturally, the passion was carried through into their children Peter, Bruce, Rod and Bronwyn who were all involved in the family farm at one point or another.



Tarnhowe's sale pavillion

This led to Tarnhowe being passed onto the next generation, my parents Peter and Belinda. After a few years my brother Nicholas and I also became involved. The passion for breeding never faltered and the drive to breed type and production continued. Peter was a keen classifier for many years and enjoyed the opportunity to look at fellow breeders' cows. Peter and Belinda also enjoyed spending time as a family at the shows and were always encouraging young people to get involved. After 30 years of being on the same farm, Peter and Belinda moved a selected herd to Ruawai. The cows continued to flourish on the Ruawai flats until just prior to Peters death in early 2018.



Maxwelton JAK Gypsy

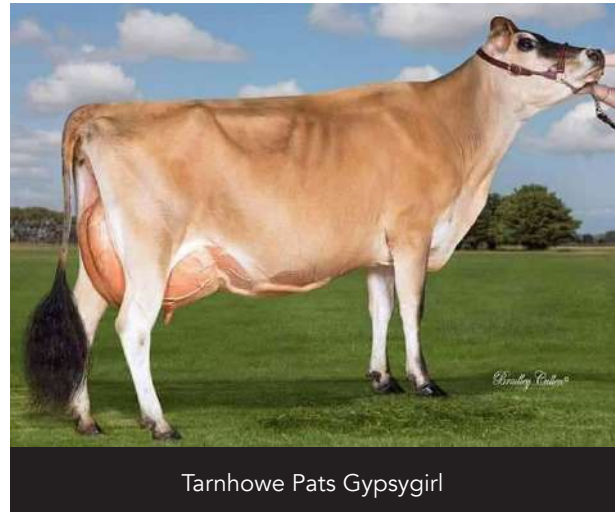
Throughout the years there have been many great cow families developed in the herd, too many to mention, so many great cows that I never know where to start.

In more recent years there was a standout family, the Gypsy family. The Matriarch cow Maxwelton JAK Gypsy, breed many daughters and left a line of cows that did well in the show ring and doing the work in the shed too. Possibly her most impressive daughter was Tarnhowe Hart Gypsy; and great granddaughter Tarnhowe Pats Gipsygirl still leaving their mark

today. This strong bloodline is a credit to the love and passion that the Mossop and Harris families have shown for the breed. This love continues through even to my job today as the Membership Services Administrator for JerseyNZ, Ayrshire New Zealand and NZ Milking Shorthorn.



Tarnhowe Hart Gypsy



Tarnhowe Pats Gipsygirl



jersey^{NZ} MERCHANDISE

The JerseyNZ office are holding a very limited amount of stock of hoodies, polos, vests and caps from our last bulk order. Please contact the office to see what we have left if you are interested in purchasing any of these items.

Keep an eye on your emails and our Facebook page for our next bulk order.



GLENUI JERSEYS

BW 406 PW 442

PROUD BREEDERS OF

Glenui Orsim Sirprise ET | 324204
gBW 441

- 2024 Jersey Future
- Dam Glenui Caster Sharleen ET
BW 464, PW 578, LW 672, 2 Year 503 MS in 286 days
- Same family as Glenui Pepper Shaker gBW 395

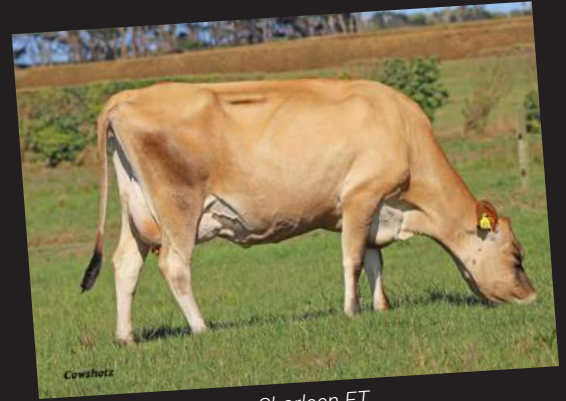


Photo of: Glenui Caster Sharleen ET

LIC BULLS

Glenui BT Liberation ET
gBW 487
Glenui Super Lamar
gBW 438
Glenui Degree Hoss ET
gBW 463

CRV

Glenui TS Langford ET
gBW 467
Glenui Super Laird ET
gBW 400

Cows

	Age	BW	PW	LW	VG	M/S	DAYS
#282 Glenui Floyd Abbey	2	601	912	963	VG85	534	282
#144 Glenui Index Polina	6	425	898	858	GP83	686	286
#123 Glenui Integrity Pyrine	6	470	850	790	EX2	634	286
#260 Glenui Hoss Lauren	2	497	779	874	VG85	538	283
#432 Glenui Berkly Blan S3S	2	585	714	769	VG85	472	262
#105 Glenui Liberation Front	2	503	632	643	VG85	473	286

VERY DRY SUMMER / AUTUMN
VISITORS WELCOME

Tony & Lesley Landers

06 274 8779
tony.lesley@xtra.co.nz

104 Lower Glenn Road
RD28, Hawera

Herd Average
2023/24
4377 Litres
260 Fat
195 Protein
455ms
261 days

Registrations

Registrations for 2023 born calves are now well underway, and many members have already completed this process for the season.

What benefits does registering have?

- Registered cattle give more options for how they can be marketed. A registered pedigree herd has a profile through your studname that offers many quality added value opportunities, including brand development.
- Registered cattle give more options for how they can be marketed, on average a registered herd sells \$200-\$800 per cow above similar herds.
- Registered animals are eligible for programmes administered by Jersey NZ including automatic access to the JerseyGenome™ programme.
- Industry good. Your registrations increase the subset of Jersey animals whose data can contribute to the national herd, increasing reliability for education and advocacy purposes.
- Registration is a prerequisite for successful bulls in the genetics industry, most AB companies require young Jersey bulls to be registered in the Jersey Herd Book.
- Higher genetics bulls sold as service sires often attract a premium when registered.

Why are registrations important to us?

Not only can registering your animals add value to your own herd there are two main benefits to wider industry, advocacy and operations:

- The primary reason is information. As part of our data access arrangements we can readily access information on the subset of registered Jerseys within the national herd. The more information we can access (i.e. the greater number of registered Jerseys), the more reliable that data is.
- Registrations generate income for Jersey NZ. It is that income that provides the resource for Jersey NZ to advocate to and work alongside industry partners on your behalf; educate Jersey and dairy farmers, and the industry, about the benefits of the Jersey breed; driving the growth of the Jersey breed.

Along with registration numbers increasing we are also increasing the number of members taking part in our registration standing order process. Increased member participation by 68% in one year has made predicting workloads and allocating time accordingly much more efficient.

If you register year to year, but struggle to remember to get your information in, fill out a standing order form and leave the rest of the work to Alayna.

Call **(07) 856 0731** or e-mail ajudge@jersey.org.nz - Alayna Judge

New Member? Jersey Plus Registrations!

Are you a new member looking to get your herd registered? Then consider registering your herd through our Jersey Plus programme. The offer is available to all new members who register their herd before 31 August of the year they join (i.e. for the next Herd Book). This programme applies to you if you:

- Are a new member with or without a registered Studname/Prefix
- Use the automated 'Turn Your Herd On' option to register all current females J12 & over in your herd
- Use either the MINDA naming system or the default naming system and sign up to the annual standing order programme.

Prices will be as follows:

First 100 females \$8.00 + GST

Next Over 100 females \$4.00 + GST

With additional discounts for larger groups as follows: (discount to apply to total account)

200 – 300 females registered additional 10% discount

301 – 400 females registered additional 15% discount

401 – 500 females registered additional 20% discount

501 + females registered additional 25% discount

That is a saving of AT LEAST \$10.00 PER ANIMAL on any female animal over one year of age.

Offer does not apply to bull registrations, these must be processed individually. Call the office now to see if this could work for you.

For more on registrations including bulls and the full registration policy, head to www.jersey.org.nz/registration





Established 1953

Townshend family first registered Jersey in 1916

A Proud History

It's 108 years since the Townshend family registered their first pedigree Jersey. It's 69 years since Crescent Haymaker, AB code 360, entered LIC. Almost 500 Crescent and Hauraki bulls AE enrolled to date.

A Positive Future - on two counts:

1. Never has it been more profitable to be a Jersey farmer. Milk value relative to meat price increases, in particular Milkfat where Jerseys have a +13% advantage over HF on a feed unit basis. This was a small advantage when Fat was valued at 40% of the value of Protein, but a material financial advantage with component value parity. and never has the Jersey carbon efficiency been more important as the world grapples with capping carbon emissions. A Jersey 12% carbon efficiency advantage (from more efficient production, lower required replacement rate and cartage & processing higher concentration milk) over HF on a MS basis is significant.
2. Crescent Genetics Attributes:
 - 2000 cow high genetic merit female breeding group spread across 5 herds.
 - All milked by employed labour – no special treatment – and the cream just rises to the top on merit.
 - Crescent bulls on average exhibit Fertility BV materially above breed average
 - Approximately one third of elite females mated to best proven LIC sires, one third to best CRV sires, and one third to Crescent Bull Team.
 - Crescent daughter proven AB bull team has real depth (and semen available for sale) and includes Cr Leo Dominator (BW 443), Global Bounty Reward (BW 452), Cr Belgrade Benji (BW 429), Cr Champ Dennis (BW 432) and Cr OI Extreme (BW 444).
 - Furthermore, Crescent has built its own daughter proven natural mating bull team whereby backing our judgement on top young sires, we can with DNA sire verification, and three years of natural mating plus some autumn matings, build 40-50 HT dtr proofs. While the bull paddock gets a bit “growly”, it is a viable way to broaden the depth of our bull team and manage inbreeding and extend our options of sires of sons. Our daughter proven natural mating team includes Baldrick 16-148 (BW 453) Cr Misty Vern (BW 372), Cr Mono Oatey (BW 430), Cr Vin Ralphy (BW 423), Cr Q Density (BW 432).
 - We are using three Bastille sons, all with BWs >500, quite heavily in NM.

Wanted to Buy

A top R1 Jersey bull, good BW, good depth of pedigree, outcross an advantage but not essential. All regular suppliers of bulls to AB companies, have bulls they think should have been AB selected. Sometimes these become more obvious as the season rolls on and sires reproof and re-rank, and dams get more HT or progeny data. code 360, entered LIC. Almost 500 Crescent and Hauraki bulls AE enrolled to date.

Mark & Diane Townshend MOB

Mobile: 0274978658 Email: mark@townshend.co.nz or office@townshend.co.nz

TOP Review 2023

In the 2023 TOP & Classification season, JerseyNZ classified a total of 7,506 animals as follows

2023 TOP Classifications	2yr	Older	Total	Herds
Members	5,723	1,783	7,506	121
SPS Contract	8,537		8,537	118
Total	14,260	1,783	16,043	239

Classifications Over Time	2018	2019	2020	2021	2022	2023
Members	7,024	6,493	7,215	8,400	8,749	7,506
SPS Contract	15,746	12,757	13,148	7,263	8,490	8,537
Total	22,770	19,250	20,363	15,663	17,239	16,043

Excellent Cows					
Year	Herds	EX	EX2	TOTAL	
2020	109	443	4	447	
2021	63	357	5	362	
2022	49	346	25	371	
2023	61	329	11	340	

Congratulations to the following herds, that had one or more cows classify as Excellent this season

Name	# of EX	Name	# of EX
The Macdonald Family Trust	32	Trilogy Farms Ltd	3
I W Scott & Sons	28	Glen Rata Farm	3
Leithlea Jerseys	25	Jeremy & Deborah Gloyn	3
Glenalla Farm Ltd	21	Ruanui Dairy	3
T & G Sneddon	14	Ian & Christina Jordan	3
Ferdon Genetics	13	Greenacres (Kereone) Ltd	3
Nicole Parkes	13	AW & LR McAllister	2
Somerton Jerseys Ltd	12	S & C Terry Ltd	2
C & D Perrott	12	Devorow Stud	2
Just Jersey Ltd	11	Shemariah Farms Ltd	2
Karaka Jerseys Ltd	8	W & L Taylor	2
Mangapiko Jerseys Ltd	8	E & S Smeath	2
N Atkins	8	Pacey Woolley Partnership	1
Crescent Genetics Ltd	7	Sherborne Farms Ltd	1
Sharons Jerseys	6	Production Plus Trust	1
Grant & Pam Wilson	6	Benworth Ltd	1
S & L Harrison	6	Payne Farms Ltd	1
R & G Ellison	6	G W & K A Weld	1
Goreland Partnership	5	Glanton Holdings Ltd	1
Frecklington Farms	5	G & K Peters	1
Snowfed Farm Ltd	5	John & Jean Ellison	1
Brooklands Dairies	5	Sublime Farms	1
Platinum Genetics	5	Bonacord Farms Ltd	1
Gayley Woods Farm	5	Kirbydale Farms Ltd	1
S & H Fowlie	5	Summit Farms (Otorohanga)	1
Rivermere Jerseys	4	Maharee Farms Ltd	1
JM & KL Sneddon Partnership	4	Te Waiu Ltd	1
Carnarvon Farms	4	G J Travers	1
G P S 2007 Limited	3	DNA Jerseys Ltd	1
Megaw Family Trust	3		
Benjamin Burmeister Trust	3		

Top 5 Herds - Udder Overall		
PTPT	Name/Farm Name	Udder Overall
CNKH	Ferdon Genetics	8.4
BGTR	Leithlea Jerseys	8.2
FVKG	AW & LR McAllister	8.1
RJNP	Glenalla Farm Ltd	8.0
KGHT	S & H Fowlie	8.0

Top 5 Herds - Dairy Conformation		
PTPT	Name/Farm Name	Dairy Conformation
DYWB	W & L Taylor	8.3
TDHH	Pacey Woolley Partnership	8.3
BGTR	Leithlea Jerseys	8.3
FXCV	The Macdonald Family Trust	8.2
CNKH	Ferdon Genetics	8.2

jersey^{NZ} FUTURE

2024 Jersey Future Team:

The Jersey Future catalogue was released in late April with a fantastic line up of young bulls making up the 2024 team. Jersey Future 2024 is backed by well-established genetics, elite cow families and utilises the very latest genomic technology.

Jersey Future continues to deliver bulls from outstanding proven and performing cow families. Many of you will be familiar with these maternal families. This 2024 team supports our goal to deliver outstanding Jersey genetics while supporting Jersey genetic gain.

Invest in our future. Invest in Jersey Future.



2024 Team

Bull Code	Name	Breeder	gBW (\$)	A2 Status
324201	Lynbrook Novak Fiordland	Lynbrook Farm Ltd	528 / 46%	A2A2
324202	Lynbrook Tikka Glenorchy-P	Lynbrook Farm Ltd	360 / 48%	A2A2
324203	Glanton Taonui Boulder-ET	Glanton Holdings Ltd	528 / 46%	A2A2
324204	Glenui Orsim Sirprise-ET	Goreland Partnership	433 / 46%	A2A2
324205	Busybrook Lamar Bushwacker	Henley Farming Company	477 / 56%	A1A2
324206	Okura Julian Luger	Maharee Farms Ltd	483 / 50%	A2A2
324207	Williams Julian Isaiah	Totara Dairy Ltd	521 / 46%	A2A2
324209	Lynbrook Definition Brooklyn	Lynbrook Farm Ltd	447 / 46%	A2A2
324210	Hawthorn Grove Bremen Havana	R & J Monk	445 / 46%	A2A2

Order Forms:

To complete an order head to <https://www.jersey.org.nz/jersey-future/> now!!!



15/03/2024

Team Average gBVs

gBVs Average

gBW (\$)	469 / 48%
Milkfat (kg)	40
Protein (kg)	17
Milk (litres)	-249
Liveweight (kg)	-20
Milkfat %	5.9
Protein %	4.4
Heifer Calving Difficulty	-2
Fertility	6
Somatic Cell Count	-0.22
Body Condition (Score)	0.11
Gestation Length	-2.7

Conformation Average

Stature	-0.66
Capacity	0.64
Rump Angle	-0.2
Rump Width	-0.01
Legs	0.11
Udder Support	0.52
Front Udder	0.59
Rear Udder	0.78
Front Teat	0.17
Rear Teat	0.02
Teat Length	0.09
Udder Overall	0.71
Dairy conf	0.61

Management Average

Adapt to Milk	0.28
Shed Temp	0.28
Milking Speed	0.17
Overall Opinion	0.34



15/03/2024

A joint venture programme



FUTURE

PROGRAMME SUCCESS

Young bulls selected by Jersey Future are all backed by productive cow families of high genetic merit, with good longevity. We can proudly announce that from previous crops seven bulls stand out from the programme and are available in 2024 Alpha nominated or the preliminary Premier Sires Teams. Some of these bulls have left outstanding daughters across the nation and are proving their high genetic merit.

By identifying young bulls with high potential and with the help of kiwi farmers, we're finding the sires of the future.

Tironui Integ Meg, VG2
Dam of Tironui GB Montage-ET

Lynbrook Star Bowie, VG86
Dam of Lynbrook Trigg Bravado



Williams Terrific Emma ET, VG2
Dam of Williams Brisbane Frenzy

Lynbrook GFD Trick ET, VG85
Dam of Lynbrook TN Te Anau



Tironui GB Montage-ET

319066 A2A2

gBW (\$) 516 / 92

Milkfat gBV (KG) 50

Protein gBV (KG) 27

Capacity 0.87

Udder Overall 0.42

Dairy Conformation 0.88

Williams Brisbane Frenzy

323201 A2A2

gBW (\$) 574 / 49

Milkfat gBV (KG) 45

Protein gBV (KG) 30

Capacity 0.70

Udder Overall 0.43

Dairy Conformation 0.67

Lynbrook Trigg Bravado

322205 A2A2

gBW (\$) 527 / 58

Milkfat gBV (KG) 37

Protein gBV (KG) 18

Capacity 0.60

Udder Overall 0.97

Dairy Conformation 0.60

These bulls are not available through the 2024 Jersey Future programme but are available through LIC

JerseyNZ celebrates the unprecedented success of the Jersey Future programme with 25 young bulls going on to be marketed since the programme's inception in 2017.

AB CODE	NAME	gBW	AB CODE	NAME	gBW
317061	Little River Trident S3J	424/87	320204	Upland Park Cem Bruce ET	203/81
318063	Glenui Pepper Shaker	402/93	321203	Norlands PKC Roxton ET	434/57
318066	Little River OI Samurai	492/92	321204	Hawthorn Grove GH Oganeev	425/57
319060	Wee Burn Desi Don	528/95	321205	Posterity Banff Desire	374/56
319061	Devon Quin Ontime-ET	334/89	321206	Glanton Punch Baxter ET	389/57
319062	Kaimatarau Kingpin Port	392/91	322200	Lynbrook Popeye Tailormade	405/54
320200	Thornlea Misty Topshot ET	266/90	322202	Okura Titus Kowhai	420/58

At JerseyNZ, we believe every farmer deserves the best cows; we believe that cow is Jersey.

Williams Kaino Summer, VG87
Dam of Williams Banff Substance

Paspalum GTG Linda 40, EX3
Dam of Paspalum Ol Limelight

Glanton Cobra Beatrix ET, VG86
Dam of Glanton CMM Burton

**Paspalum Ol
Limelight**
317060 A1A2

gBW (\$) 410 / 89

Milkfat gBV (KG) 29

Protein gBV (KG) 10



**Lynbrook TN
Te Anau**
323206 A2A2

gBW (\$) 517 / 47

Milkfat gBV (KG) 51

Protein gBV (KG) 21

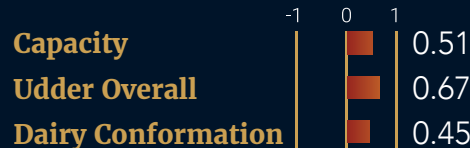


**Williams Banff
Substance**
323200 A2A2

gBW (\$) 500 / 57

Milkfat gBV (KG) 41

Protein gBV (KG) 15



**Glanton CMM
Burton**
323207 A2A2

gBW (\$) 501 / 54

Milkfat gBV (KG) 36

Protein gBV (KG) 18



To order straws from these outstanding bulls contact your local LIC® Representative.



15/03/2024



Fertility Focus: NZAEL and DairyNZ's work on improving fertility indicators

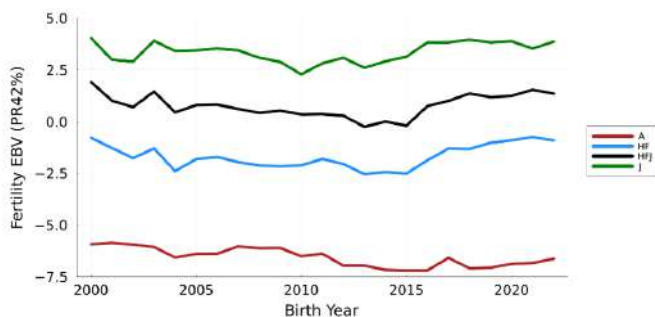
NZAEL Update by Andrew Fear, NZAEL Manager, DairyNZ

New Zealand's seasonal pasture-based system relies on cows being able to get back in calf quickly during early lactation. Improved fertility performance has an economic impact for farmers through improved production efficiencies and fewer empty cows.

Herd Fertility depends on eight key areas, and each plays an important role in herd reproduction. NZAEL and DairyNZ are focused on the genetic aspect of herd reproduction, looking to accelerate fertility gain and find better indications of an animal's fertility potential at a younger age.

Genetic gain in fertility in the national herd

Over the past 20 years there has been little or no gain in the average genetic merit for fertility of the national herd.



Animals that don't get in calf quickly are culled early, creating a cost to farmers by increasing the replacement rate. This is why it is so important to accelerate the rate of genetic improvement for reproductive performances.

There are a few reasons why genetic gain is hard to achieve in fertility.

Fertility, as measured by the fertility Estimated Breeding Value (EBV), has a heritability of ~5%. Low heritability of

a trait suggests the genetic factors play a relatively small role in the differences between individuals, and environmental factors play a larger role. With a lower heritability it takes a long time to make (or lose) gains in fertility.

Pregnancy-based traits are expressed relatively late in life, so a sire's fertility EBV does not reach a high reliability until he has been widely used, and younger sires with a high EBV can be overlooked.

NZAEL and DairyNZ have worked to improve the accuracy of the existing fertility EBV and are researching physical traits that may indicate a heifer's fertility potential earlier in life.

Fertility Estimated Breeding Values

In December 2023, NZAEL introduced a conception-based fertility estimated breeding value (EBV) into the Breeding Worth index (BW). This conception-based fertility EBV represents the proportion of a bull's daughters expected to become pregnant in the first six weeks of mating. The previous fertility EBV was based on calving date, whereas this EBV rewards a successful pregnancy.

Cows that conceive late or do not conceive are more likely to be culled for infertility. The new conception-based trait is a better predictor of whether a cow will be culled for fertility reasons compared to the previous EBV.

The traits used in the current genetic fertility evaluation include the cow's ability to be mated in the first three weeks of breeding and get in calf within the first six weeks of breeding. Currently, the evaluation uses calving date and back calculates conception date. In future, NZAEL is looking to include pregnancy diagnosis data to provide an earlier indication of fertility.

Embryo Donors and carryovers

In December 2023, NZAEL also improved how embryo donors and recipients are handled. These cows will no longer be penalised for apparent infertility due to unusual records.

Penalties have been introduced for fertility failure and carryovers. If a bull has a high proportion of daughters carried over or culled for fertility reasons, his Fertility EBV is likely to decrease

New heifer phenotypes to improve fertility for genetics

DairyNZ scientists have been exploring potential heifer phenotypes to improve genetic gain in fertility. The proposed new traits needed to meet two criteria potential to increase genetic gain for fertility, and the ability to apply the trait to all breeds, as BW is not breed specific.

This study identified two phenotypes that are early indicators of future fertility performance, Age at Puberty (AGEP) and Anogenital Distance (AGD).

Age at Puberty (AGEP) was found to be predictive of the sire and cows' fertility. Positive fertility BV heifers on average achieved puberty 27 days earlier and were 20 kg lighter. Heifers were classified as having reached puberty through testing for progesterone, a hormone associated with sexual maturity, in blood samples.

Cows with a long Anogenital Distance (AGD) (>102mm), were found to be less fertile than cows with a short AGD (<102mm). AGD is measured from the centre of the anus to the base of the clitoris.

Status

This research was initially undertaken using a herd of 550 Holstein-Friesians of the top and bottom fertility breeding values. The study was scaled up in 2019 to study 5010 Holstein Friesian heifers total, and again in 2023 for 5260 Jersey heifers. The Jersey study is still underway. Measurements for AGD and AGEP were collected in 2023, with further data about actual reproduction performance to be collected in their first and second lactations.

Findings

The research showed AGEP and AGD are moderately heritable traits. This means there is potential to selectively breed for cows with earlier AGEP or shorter AGD.

Results from the Holstein-Friesian study showed:

- Heritability of AGEP was 34%. This was measured using a 'low resolution' but scalable method involving three blood progesterone tests taken at monthly intervals when heifers were about 10, 11 and 12 months old.
- Heritability of AGD was 23% when measured at about 11 months old, increasing to 29% when the heifers were about 29 months old, during their first lactation.

The aim of this study was to find a genetic-based solution to improve fertility in lactating cows. Selectively breeding for AGD and AGEP would only have value if they were also indicators of ability of a cow to get back in-calf. Both AGD and AGEP were found to have moderate correlations with reproductive success measures during first and second lactation.

AGD and AGEP are not well correlated with each other, so both phenotypes could be used to accelerate genetic gain through different pathways. Improved reproductive performance in lactating cows could be expected if the AGEP and AGD measures are included in fertility EBVs.

The study found that a higher jersey content in a crossbred meant a heifer was likely to reach puberty earlier.

Next steps for fertility

- *Validation of results of results from the Jersey cohort's first and second calving.*
- *Explore any potential linkages or correlations between AGD, AGEP and other traits within BW. Need to determine if there are any unfavourable consequences of selective breeding for these two traits and then explore the potential to include these two phenotypes in a new fertility EBV.*
- *Develop approaches for large-scale measuring of AGEP and AGD in a cost- and time-effective manner.*

Obituaries

It is with deep regret and profound sadness we record the passing of the following members, previous members and friends of Jersey NZ.

Jeanette Potts - CAIRN TOUL - Waikato

Murray Macdonald - MERRIWAY - Waikato

NZ Dairy Event²⁰²⁴

HELD: 22 – 24 January - Manfield, Feilding

JERSEY SECTION JUDGES: Simon Tognola (AUS); Associate Susanna Booth (NZ)

FULL RESULTS:
www.jersey.org.nz/nz-dairy-event-2023/

Jersey Supreme Champion

Ferdon Tbone Veneer / Ferdon Genetics, Otorohonga



- + 1st Place Jersey 4 Year Old In-Milk
- + Senior In-Milk Interbreed Reserve Champion
- + Senior In-Milk Jersey Champion

Senior In-Milk Jersey Reserve Champion

Kuku Van Gemmah / Horn Genetics



- + 1st Place Jersey 7 Years & Over In-Milk

Intermediate In-Milk Jersey Champion

Ferdon Victorious Shirlee / Ferdon Genetics, Otorohonga



- + 1st Place Jersey 2 Year Old In-Milk
- + Best Uddered Intermediate Jersey Cow
- + Intermediate In-Milk Interbreed Reserve Champion

Intermediate In-Milk Jersey Reserve Champion

Kuku Vic Precious / Horn Genetics, Feilding



- + 1st Place Jersey 3 Year Old In-Milk

Junior Jersey Champion

Manor Chochip Alaska / Thomas Jeyes



- + 1st Place Jersey Junior Yearling Heifer
- + Junior Jersey Yearling Heifer
- + Junior Interbreed Reserve Champion

Junior Jersey Reserve Champion

Radley Swagger Chiquita-ET / Powell Family, Rongotea



North Island Championships²⁰²³

HELD: 2 December - Whangarei A&P Show

JUDGE: Richard Adam

North Island Champion Cow

Carnmor Speedway Fairy / K & B Woolley



+ 1st Place Cow 4 years & over

Reserve North Island Champion Cow

Upland Park Flint Hym / K & B Woolley



+ 1st Place Heifer 2 years old In-Milk

North Island Junior Champion Cow

Fusion Kamikaze Valerie / M Fletcher



+ 1st Place Heifer Calf

North Island Reserve Junior Champion Cow

Willowcreek Unique Fudge / K & B Woolley



Jersey Section

Upland Park Flint Hym / K & B Woolley

+ 1st Place Heifer 2 Year Old In-Milk

Carnmor Speedway Fairy / K & B Woolley

+ 1st Place Cow 4 Years and over

Willowcreek Unique Fudge / K & B Woolley

+ 1st Place Heifer Yearling born June 1 - August 31 2022

Pukeni Speedy Faith / K & B Woolley

+ 1st Place Heifer 3 Year Old In-Milk

Pukeni Speedy Faith / K & B Woolley

+ Overall Best Uddered Cow

Fusion Kamakazi Valerie / M Fletcher

+ 1st Place Heifer calf born since June 1 2023

FULL RESULTS:

<https://www.jersey.org.nz/jerseynz-north-island-championship/>

South Island Championships²⁰²³

HELD: 15-17 November - NZ Agricultural Show, Christchurch
JUDGE: Shane Oslear (AUS), Associate Alannah Skedgewell

FULL RESULTS:
<https://www.jersey.org.nz/south-island-championships/>

South Island Senior Champion Cow

Glenalla Change Up Kiki / Gilbert Family



- + 1st Place Four years old In-Milk
- + Supreme Champion Jersey
- + 1st Place Four years old In-Milk All Breeds

South Island Reserve Champion Cow

Lilac Grove Koop Rise / P & C Hansen



- + 2nd Four Years Old In-Milk
- + 4th Four Years In-Milk All Breeds

South Island Intermediate Champion

Lilac Grove Yega Comet / P & C Hansen



- + 1st Place Three Years Old In-Milk
- + 4th Place Three Years Old In-Milk All Breeds

South Island Reserve Intermediate Champion

Glenalla Casino Brandy / Gilbert Family



- + 2nd Place Three Years Old In-Milk
- + 2nd Place Three years Old In-Milk All Breeds

South Island Junior Champion

Harbourside Tors Jennie / P & C Hansen



- + 1st Place Junior Yearling Heifer
- + 1st Place Junior Yearling Heifer All Breeds
- + Reserve Junior Champion All Breeds

South Island Reserve Junior Champion

Lilac Grove Rambo Comet / P & C Hansen



- + 1st Place Senior Yearling Heifer
- + 2nd Place Yearling Heifer All Breeds

Royal Show²⁰²⁴

HELD: 20-21 January - Horowhenua
JUDGE: Murray Skedgwell

Royal Senior Jersey Champion

Kaimatarau General Jewel / Powell Family



- + 1st Place Four Years Old
- + 1st Place Four Years All Breeds
- + Best Udder Jersey & All Breeds
- + SUPREME CHAMPION ALL BREEDS

Royal Senior Reserve Jersey Champion

Wyeholme Gun Steffi / MC & LB Wood



- + 1st Place Five & Six Years Old
- + 2nd Place Five & Six Years All Breeds

Royal Jersey Junior Champion

Lindale Recharge Malibu / MC & LB Wood



- + 1st Place Heifer Calf

Royal Jersey Reserve Junior Champion

Lindale Memphis Mead / M & L Wood



- + 1st Place Heifer Calf

Jersey Section

Harvest Glen Gun Delphi / MC & LB Wood

- + 1st Place Heifer 2 Year Old In-Milk

Kaimatarau General Jewel / Powell Family

- + 1st Place Cow 4 Years and over

Lindale Recharge Malibu / MC & LB Wood

- + 1st Place Yearling Heifer

Shirlett Dexter Lilly / Christina Stuart

- + 1st Place Heifer 3 Year Old In-Milk

Kaimatarau General Jewel / Powell Family

- + Overall Best Uddered Cow

Lindale Memphis Mead / MC & LB Wood

- + 1st Place Heifer Calf

FULL RESULTS:

<https://www.jersey.org.nz/horowhenua-ap-i-show-2024/>

75 YEARS OF FERDON TOPS AT \$24,000 Otorohonga – 22 April 2024

Story and photos by Dianna Malcolm
- MUD MEDIA

Family and solidarity shone through at the 75 years of Ferdon sale today in Otorohonga today.

The family hadn't hosted an on-farm sale for 29 years, and not only was there an intense sense of family, the industry also turned out in force to support one of New Zealand's highest performing herds. The crowd included well-known Australian breeder, Pat Nicholson, of Jugiong Jerseys from northern Victoria – further underlining the respect Ferdon has from around the world.



Jugiong Jersey's Pat Nicholson (right) from northern Victoria in Australia was on-farm to check out Ferdon's breeding programme.



Top price Jersey and top price of the sale was the final lot to sell today. She is pictured with the dedicated sale team and one of the three new owners (on the halter) Peter Hansen, of Lilac Grove Jerseys.

Australian auctioneer Brian Leslie acknowledged that of the Jerseys, Holsteins, and Ayrshires, that sold – each featured lots that sold for \$20,000 or more. This sale came at the end of a busy calendar this month for the registered market, and some had wondered how deep everyone's pockets would be by the time Ferdon rolled around. They needn't have worried – the sale (according to auctioneer Brian Leslie and selling agents PGG Wrightson) averaged \$7305 overall. Between the three breeds and two consigners, the cows averaged \$9550, the in-calf heifers averaged \$7133, and the yearlings and younger calves averaged \$5500.

The top price Jersey and the top price of the sale came on the last lot. She was knocked down to Peter and Claire Hansen, of Lilac Grove Jerseys, at Fernside in Canterbury. Ferdon Fizz Viyella EXC sold for \$24,000 due to sexed Caspian in July. In 274 days continuing she has 645kg MS up with a 5.8% fat and 4.2% protein. She is headed south in a three-way syndicate between Lilac Grove Jerseys (Fernside), Sara and Stu Russell (Ashburton), and Graham Smith and Debbie Mercer (Invercargill). The underbidder came from Australia.



Significant crowd filled the PGG Wrightson tent.



The Ferguson family before the sale started united and ready for action.

Lilac Grove's Peter Hansen said he had three lots that he was interested in, but the Viyella was his main quarry. "I had a member of the family that we lost before we got a female, and I just felt that it got us back into that family," he said. "It was a worry that if you held on, you might miss out and have nothing but it was a calculated risk. She's such a nice balanced cow from a really deep family – cow families are everything. "She is so dairy, and that production of more than 7000 litres was part of our thinking." He said the sale was a shot in the arm for the Jerseys.

"I thought it brought a lot of energy to the industry that has been missing in the Jersey circles. It was hard to know if it would go close to matching the Holstein sales that have been held recently, but I think it did a really good job of that and Warren and Michelle and their family should be commended for what they've done for the Jersey breed today."

Top price Holstein was Lot 26, Waipiri CR Freaky Girl-ET, who sold for \$20,000. She was offered by Waipiri Holsteins and she

was snapped up by Ferdon Genetics. Waipiri met the market with a selection of 13 of their best. Freaky Girl is the reigning Holstein and All Breeds Intermediate Champion from the New Zealand Dairy Event in January. The Fullerton family reported that they averaged \$12,500 over their group. Top price Ayrshire was Lot 19 who sold for \$20,000. Ferdon Bigstar Goldie V9-9 was Intermediate Champ on her debut at Waikato 2023, and Jacoba Gread (on the halter) was thrilled to work with her during the sale preparation and take her home afterwards.

All Prices \$10,000 and above (Jersey unless stated):

LOT 75 – Ferdon Fizz Viyella EXC – sold to Peter Hansen (Rangiora), Ngatimaru Farming Co (Ashburton) & Graham Smith & Debbie Mercer (Invercargill) – **\$24,000**

LOT 26 – HOLSTEIN – Waipiri CR Freaky Girl-ET – sold to Ferdon Genetics, Otorohanga – **\$21,000**

LOT 19 – AYRSHIRE – Ferdon Bigstar Goldie – sold to Heavenly Moos Ltd, Ohinewai – **\$20,000**

LOT 1 – Ferdon Victorious Flower VG87 – sold to AW McAllister, Ohaupo – **\$17,000**

LOT 5 – Ferdon Victorious Shirlee VG87 – sold to Glenalla Farm Ltd Rakaia – **\$15,000**

LOT 6 – Ferdon Chocochip Bella – sold to Johnson and Parkes, Hawera – **\$12,000**

LOT 30 – HOLSTEIN – Waipiri Moovin Suri-ET – sold to Jared Hudson, Thames – **\$12,000**

LOT 32A – HOLSTEIN – Waipiri Lambda Kristy – sold to C view Trust (S Buhler), Hawera – **\$11,000**

LOT 3 – Ferdon Viral Fashion VG87 – sold to Shaydoc Ltd, Morrinsville – **\$10,000**

LOT 16 – Ferdon Askn Lippy VG89 – sold to NJ Moffitt Trust, Te Awamatu – **\$10,000**

LOT 20 – AYRSHIRE – Ferdon Bigstar Lass VG9-9 – Cardale Farm, Walton – **\$10,000**

LOT 33A – HOLSTEIN – Waipiri Eye Candy Paris – sold to Ultimate Holsteins Ltd, Pokeno – **\$10,000**

LOT 37 – HOLSTEIN – Waipiri Dropbox Fran – sold to Dean Fullerton and Andrew Dreadon, Ohaupo – **\$10,000**

LOT 38 – HOLSTEIN – Okawa Trax Lady – sold to C View Trust (S Buhler), Hawera – **\$10,000**

LOT 39 – Allandale Tbone Quintete EXC – sold to RJ and S Trainor, Dannevirke – **\$10,000**

Sales Results

Jersey Miles Dispersal Sale

David & Karen Miles, Taupiri – 8-9 April 2024 – 100% online

The Miles' Dispersal sale featured 238 cows and heifers in total across two nights, held on Bidr. The Miles' OAD herd came from the registered Brynmenin herd.

The average was \$1,876

Top priced incalf heifer sold to Herb Wuest for \$3,600.

Top priced cow went to Natalie Dyson for \$4,100.

Kohitiata Sale

N & D Atkins, Dannevirke – 11 April 2024 – Hybrid, On Farm and Online

A total of 31 Jersey in-calf heifers were up for sale at this year's Kohitiata Sale held in Dannevirke. The average price for animals sold was \$1,493. The top selling lot was Lot 16 – Kohitiata Bara Sunbeam, selling for \$1,600.

Rock View Sale

Gary & Karen Peters, Midhurst – 16 April 2024 – On Farm and Online

The high producing Rock View herd belonging to Gary & Karen Peters of Midhurst was dispersed on 16 April 2024. A fine autumn day saw a good crowd in attendance and lots of Bidr bidding too. A mixed breed herd that sold 131 cows averaging \$2,420.

The 33 Jersey cows averaged \$2,710 which included 18 cows carrying the Leithlea prefix who averaged \$3,410. Top prices for the Jerseys were \$5,300 for Lot 127 Leithlea Magnum Goodin. Lot 114 Leithlea Rio Faris made \$5,000 as did Lot 122 Leithlea Magnum Jena. Sale was jointly conducted by PGG Wrightsons and Selwyn Donald.

Provided by Cliff Shearer

Jersey Power Annual Sale

Nigel & Juliette Riddell, Otorohanga – 17 April 2024 – 100% online

This year's Jersey Power sale overflowed with progeny of high performing cow families. Strong classification and competitive local and national competition entrants, the Just Jersey herd derives from deep cow families, transmitting strength, longevity, milking ease, udder quality and profitable production.

A total of 28 lots were offered, comprising of 25 R2 in-calf heifers and 3 elite empty in-milk cows. The average was \$1,988, with the two top selling lots, both selling for \$3,000 – Lot 26, Thornlea Van Tansy and Lot 27, Thornlea SP Honey. Honey is the granddaughter of Ashvale KGB Homesick 9-9 and has been a member of Just Jersey's successful Semex team.

Kauri Gold Annual Sale

BW & IC McClean, Rivermere Jerseys Limited, Aponga Jerseys Limited
18 April 2024 – 100% online

The annual Kauri Gold sale was held on the 18th of April and consisted of 1 cow, 55 R2 heifers and 4 rising 1 year old heifer. The average was \$1,931, with the top selling animal being Lot 42 – Rivermere Integ Velma. Velma has very strong and close up bloodlines into Lamorna Blue Dream and Big Hollow Beauty families. Velma sold for \$3,350.

Lynbrook Jersey Stud Dispersal Sale

Kevin Ireland, Tokoroa – 24 April 2024 – 100% online

The Lynbrook Jersey Stud Dispersal Sale comprised of a total of 162 lots; in-calf cows, in-calf Heifers, in-calf maiden heifers and empty cows. The Lynbrook stud was first established in 1993 with the purchase of Kevin's father, Lindsay's herd. Kevin places an emphasis on conformation, larger size, udders and temperament, with over 90% of the herd received EX or VG.

A total of 162 lots were up for sale, selling for an average of \$2,161. The top selling animal was Lot 19, Lynbrook Quick Skylar, our of Lynbrook GG Quicksilver and Lynbrook OI Sophie, selling for \$9,800.

Tahau Jerseys Sale

Tim and Josh Sneddon, Tokoroa – 29 April 2024 – 100% online

A total of 20 Jersey cows and 13 Jersey In-milk heifers were up for sale from the outstanding conformation and production herd of Tahau Jerseys. The average for the Jerseys sold was \$1,878, with the top selling lot being Lot 20 – Tahau May Appaloosa. With 60 years of breeding, Tahau uses a mixture of Danish and New Zealand genetics.

Cawdor Jerseys Herd Reduction Sale

F & C MacBeth, Nelson – 2 May 2024 – 100% online

Based near Nelson, the Cawdor Jerseys Sale comprised of 25 in-calf cows, 11 in-calf heifers and 15 rising 1 year heifers. The average was \$1,877, with the top selling lot being Lot 12 – Cawdor TDG Piano S1J, selling for \$3,700.

Jersey Pride Sale

JerseyNZ Annual Conference, Rotorua – 15 May 2024

A total of 14 lots sold for an average of \$5,821.43.

The top priced lot went to Lot 1 – Glanton FC Bane, selling for \$16,900 to Shayne O'Shea from Whangarei. Of the five best cows bred at Glanton in their 45 years, three appear in the bottom line of Bane's pedigree, including Glanton Mans Blanche (Hall of Fame 2022, fourth dam). Bane's dam, Glanton KFP Bane ET sold for \$15,500 in the 2023 Jersey Pride sale.

Other highlights included:

- Lot 2 – Matagouree PKC Briar a high BW and PW 2-year-old heifer, sold for \$8,200
- Lot 8 – Ashvale GLV Golden from vendors, Rodney & Jocelyn Dobson sold for \$7,500



20
25
CALENDAR

jersey^{NZ}

Official Calendar of The New Zealand
Jersey Cattle Breeders Association (Inc)

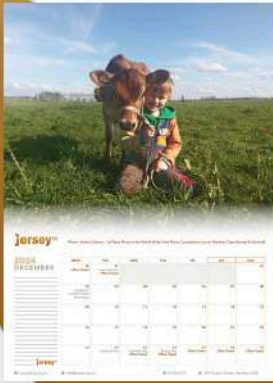
20
25

jersey^{NZ}

CALENDAR

PROMOTE YOUR STUD

Sponsor a month of your choice in the 2025 JerseyNZ Calendar for the cost of \$200. If you are interested in sponsoring a page please contact Jackie at jkennedy@jersey.org.nz



Ngatea Jerseys
PROFIT FROM PASTURE

FUTURE FOCUSED

Supporting JerseyNZ through the use of JerseyFuture Sires.

Encouraging Youth & Supporting the next generation.

Season Highlight - Ngatea Ogi Clover S2J winning the Semex On-farm Competition 6 & 7 year class.

Brian, Julie, Celine and Ella
Welcome visitors to their home and farm near Ngatea, Hauraki Plains.

Ngatea Jerseys
Brian - 027 2919533
Julie - 027 6082171



Ngatea Ogi Clover S2J
BW 373, PW 569, 479 kgMS, 242 Days

DATES TO REMEMBER

 Jersey NZ | Get all of the Jersey NZ updates, reminders and general Jersey business on our Facebook

2023 JULY	
17	JerseyNZ Board Meeting

2023 AUG	
1	Jersey Future nominations open
20	Ian Harris Memorial Heifer Competition - entries close
30	TOP applications close
30	Herd Book closes

2023 SEP	
11	Annual Report issued
13	Jersey Future nominations close
26	JerseyNZ Board Meeting
26	Annual General Meeting
27	Semex On Farm Challenge entries open

2023 OCT	
1	Holley Geck Memorial Trophy entries close
1	Marcus Trotter entries close
4	Jersey Focus Booking Deadline
11	Jersey Focus Copy Deadline
25	Semex On Farm Challenge entries close
28	Labour Day - office closed
31	Herd Book issued

COMMITTEES

COMMITTEES, PANELS AND WORKING GROUPS 2023/24

AUDIT & RISK COMMITTEE

Glenys Ellison, Alison Gibb, Abbey Stantiall, Fiona Carrick

INDUSTRY AFFAIRS COMMITTEE

Roger Ellison, Julie Pirie, Glenys Ellison, Cameron Townshend, Pam Goodin

GENETICS COMMITTEE

Steve Ireland, Tony Landers, Barry Montgomery, Aaron Courage, James Courtman

JUDGING & CLASSIFICATION COMMITTEE

Barry Montgomery, Ross Riddell, Richard Adam, James Wallace, Graeme Collins, Maurice Pedley, Robert Hall, Warren Ferguson

YOUTH COMMITTEE

Julie Pirie, James Wallace, Nick Browning, Monique Radford, Megan Thomas, Annabelle Jeyes

ANNUAL CONFERENCE ORGANISING COMMITTEE

Pam Goodin, Alison Gibb, Ross Riddell, Maurice Pedley, Glenys Ellison, Jackie Kennedy

LINK LIVESTOCK LTD - DIRECTOR

Alison Gibb, Julie Pirie (observer)

DIRECTORS APPOINTMENT COMMITTEE

Trent Paterson, Ross Riddell, Robert Hall

DIRECTOR EXPENSES REVIEW PANEL

Steve Ireland, Colin Hickey

JERSEYGENOME WORKING GROUP

Tony Landers, Glenys Ellison, Glenn Wilson, Josh Sneddon

JERSEY FUTURE SELECTION PANEL

Steve Ireland, Tony Landers, Aaron Courage, James Courtman

NZ DAIRY BREEDS FEDERATION

Julie Pirie, Barry Montgomery, Fiona Carrick with Pam Goodin as reserve

RAS ALL DAIRY BREEDS SHOW ETHICS COMMITTEE REPRESENTATIVE

Barry Montgomery

JERSEY ADVANTAGE TRUST BOARD REPRESENTATIVE

Glenys Ellison, Evan Smeath

JERSEYLAND FARMS LTD BOARD REPRESENTATIVE

Julie Pirie

Office News

TRAITS OTHER THAN PRODUCTION SEASON

Are you interested in becoming a TOP Inspector? We could really use a few more inspectors. This would really take the pressure off existing inspectors – as the old saying goes “Many hands make light work”. Inspectors receive a daily allowance, and all expenses are covered including travel, accommodation, and meals. If you are interested in finding out more information, or tagging along with an inspector for a ride-along to see what its like or how to get certified, please contact Alayna info@jersey.org.nz or 07 856 0731.

ANNUAL GENERAL MEETING 2024

The 2024 Annual General Meeting has been scheduled for Thursday 26 September 2024 at Innovation Park, Hamilton, commencing at 1.00 pm. Once again, this will be a hybrid in person / Zoom meeting. Look out for more information in the coming months.

The opportunity to join the AGM virtually means that all members are enfranchised to take part, increasing membership participation in governance activities.

JERSEY NZ TEAM

Office hours are 8.00 am – 4.30 pm. Not all of the team work full-time and our hours of work are listed for you below. We will respond to emails during our work hours.

Pam Goodin - General Manager
Mon-Fri 8.00 am – 4.30 pm

Sean Bresnahan - Digital Design Coordinator
Mon-Fri 8.00 am – 4.30 pm

Michelle Calcott - Business Administrator
Mon-Fri 9.00 am – 3.30 pm

Alayna Judge - Member Services Administrator
Mon-Fri 8.00 am – 3:30 pm

Jackie Kennedy - Marketing & Promotions Coordinator
Mon-Thurs 7.30 am – 3.30 pm

HERD BOOK & PRODUCTION REGISTER

The Herd Book and Production Registers that have been delayed from 2022 & 2023 are expected to be available shortly, and we expect that the 2024 issues will be produced on time later this year. We apologise for the delay, some of which have been beyond our control.

The Herd Book lists all animals registered with JerseyNZ from 1 September to 31 August annually. It also includes Officer & Judges Lists; Association By-Laws; members lists, addresses & prefixes. The Herd Book is available for purchase at \$40.00 incl GST per issue.

The Production Register lists the season's lactation details for all registered Jersey cows that have completed 4 herd tests and have a minimum of 100 days in milk, along with TOP scores and awards. The Production Register is available for purchase at \$45.00 incl GST per issue. Both publications are available by pre-order. If you would like to order your copy please contact info@jersey.org.nz.

REGISTRATION NAME REMINDER

JerseyNZ would like to take this opportunity to remind members that when purchasing animals and/or semen that the marketing of a 'name' does not necessarily mean that an animal is registered with JerseyNZ. If a three generation pedigree is provided, a registered animal will be noted as PJ or SJ, the pedigree will carry the JerseyNZ logo and state REGISTERED JERSEY. If you are unsure, please confirm with the appropriate vendor.

OFFICE ACCESS

We always welcome visits from members. We are no longer maintaining a separate visitor car park, so if you are intending to visit, please just give us a call first and we will make a park available. Alternatively, there is free 120 minute parking on the office side of Tristram St, or paid parking on the Hinemoa Park side of the street using the PayMyPark app. There is also free parking in many of the surrounding streets.

MEMBER CONTACT

We ask members to consider their sustainability footprint when receiving newsletters and updates from Jersey NZ. Electronic notification is now the simplest, quickest and more cost-efficient way for us to remain in contact with you, highlighted by longer mail delivery times and increased postage costs. All our newsletters, forms and activities are also downloadable from the website, and online forms are also available for most activities. Where your newsletter is printed, we will not print and include attachments, but these will still be available on request from the office.

We urge members to choose electronic delivery as their preferred option to receive notifications from us. To do so, just email us at info@jersey.org.nz.

CONTACT US:



290 Tristram Street, Hamilton 3204
PO Box 1132, New Zealand, 3240

 07 856 0816	 @JerseyNZ
 info@jersey.org.nz	 www.jersey.org.nz

Dannevirke	Wayne Johnstone	Ruth Johnstone	waynejohnstone@xtra.co.nz	06 374 8252
Hawera	Linda Megaw	Kelvin Tosland	tozzies@xtra.co.nz	06 274 9123
Karamea	Brian Jones	Debbie Langford	langford@farmside.co.nz	03 782 6650
Lower Waikato	Natalie Dyson	Alison Gibb	arrk.gibb@gmail.com	07 824 4425
Manawatu	Ron Horn	Eileen McQuillan	bellamour@xtra.co.nz	06 324 8749
Marlborough	Hartley Neal	Christina Jordan	wjordan@xtra.co.nz	027 628 5308
Nelson/Golden Bay	Wayne Packard	Brian Nesbit	chardonay.nz@gmail.com	03 525 9969
North Taranaki	Matthew Cox	Jay Luckin	lucks@xtra.co.nz	027 338 3563
Northern Wairoa	Graeme Collins	Margaret Pinny	marg_pinny@xtra.co.nz	09 439 4560
Okato/Cape Egmont		Bruce Sim	margaretsim74@gmail.com	06 752 4482
Rotorua/Reporoa		Henry Van der Hulst	parkwood-reporoa@xtra.co.nz	07 333 8494
South Waikato		Gayle Sneddon	t.g.sneddon@xtra.co.nz	07 886 6870
Southland	Sandy Simmons	Graham Smith	teeweez@slingshot.co.nz	03 206 6695
Te Aroha	Rick Jones	Marian Wallace	grahmarjerseys@yahoo.co.uk	07 884 5959
Te Awamutu	Marion Johnson	Shirley Hamilton	drumclog@farmside.co.nz	07 873 2802
Te Puke	Tom McDowell	Margaret Scrimgeour	jmscrim.nz@gmail.com	07 533 3681
Thames Valley	Philip Brewster	Ruth Jeyes	tvjc.secretary@gmail.com	021 0220 0095
Wairarapa	Kevin Coker	Sue Prescow	suepresow@yahoo.co.nz	027 283 9372
Westland	Elaine Martin	Jackie Monk	hawthorn4grove@xtra.co.nz	03 755 6043
Whangarei	Lyna Beehre	Jodeen Cutforth	bluelyna@xtra.co.nz	09 433 9636

Chloe Sargent
Waikato

Brad Powell
RADWELL
Waikato

Ingleside Ltd
Ross Morton
INGLESIDE
Southland

Christie Buchanan
DOONSKAA
West Coast

Arya Taylor
MALVERN
Waikato

Sienna Bourke
Taranaki

Fergus Bourke
Taranaki

Ian & Denise Bryant
DENIAN
Southland

Nerida Bateup
Waikato

Nathan & Toni Parry
PARRYDISE
Waikato

A & M Hintz
SILVERSEA
Waikato

Conna Smith
Taranaki

Gisela Bach
Waikato

Thor & Alayna Judge
TARNHOWE
Waikato

M & L BALL LTD
Mark & Lana Ball
SUNSET
Waikato

Jamie Abbott & Ethan Foster
WOODFORD
Waikato

Vat Fullers Ltd
Noah Dibble & Ella Pirie
GOLD CLASS
Waikato

Tyla Ireland
SAVANNAH
Waikato

Thomas Hayward
Waikato

Tamara Treymane
Southland

Jessie Hunter
Waikato

TK Farms
Mark Townshend
CRESCENT
Waikato

SCHOLARSHIP FUND ROLL OF HONOUR

1992 Te Awamutu Jersey Club
1994 Matamata Jersey Club
1995 A W & E E Miers
1997 R A & E M Black
1998 Ward 5 AGM & Conference Committee
1999 Wairarapa Jersey Club
2000 North Taranaki Jersey Club
2001 Nelson / Golden Bay Jersey Club
2001 Matamata Jersey Club
2001 Lower Waikato Jersey Club
2002 Link Livestock Ltd

2002 D E & F S Black
2002 Manawatu Jersey Club
2004 T W & G Y Sneddon
2004 Whangarei Jersey Club
2005 Dannevirke Jersey Club
2007 AW Harnett Ltd
2010 North Taranaki Jersey Club
2010 RE & JC Gibson
2021 Franklin Jersey Club

JERSEYNZ THANK YOU FOR YOUR CONTRIBUTION TO THIS FUND.



International News

L-R Daniel and Sandra Bacon are continuing the family's farming dream at Brookbora Jerseys, despite losing Robert (right) to cancer last year.

Working towards the future

A northern Victorian dairy is poised to host one of the most exciting Jersey cattle sales to hit the market this year.

Brookbora Jerseys – owned by the Bacon family – which milks 300-head on 283 irrigated hectares in Tennyson, is consistently in the top 1% herd for BPI [Balanced Performance Index] for Australian Jerseys. It has held Jersey Australia's Platinum Production award for the last three decades – averaging (in 2022) 668kg milk solids in 305 days (with an average bodyweight of 430kg).

It has also won the Premier Breeder and Premier Exhibitor Jersey banners at International Dairy Week (IDW) for the last five successive years and has several internationally recognised sires represented by global artificial breeding companies, including Brookbora Valentino Askn, Brookbora Bushfield, Brookbora Borung, in addition to co-breeding Pannoo Abe Vanahlem.

On May 28, the family will open its gates to the highly anticipated "Brookbora 60th Anniversary Edition Invitational" sale. The Bacon family will auction 45 of its best females, together with 15 of Brookbora's select sires (the bulls will be sold online on the day). Together it represents 60 Brookbora animals for 60 years of Jersey breeding. Brookbora has also gathered 30 additional lots from its high-profile contemporaries to round out its offering, and to make the sale a Jersey celebration.

Loss, sacrifice, and moving forward

The sale comes a year after the Bacon family's devastating loss of Robert [Bert] to cancer. Robert's widow, Sandra, and son Daniel continue to farm Brookbora in partnership, and they said the timing of the sale felt right.

"We are mindful that Robert encouraged us to continue to push forward, while not forgetting the past," Sandra said. "He used to always urge us to "achieve something" every day, and his mantra has kind of stuck with us all and become our signature saying – #achievesomething."

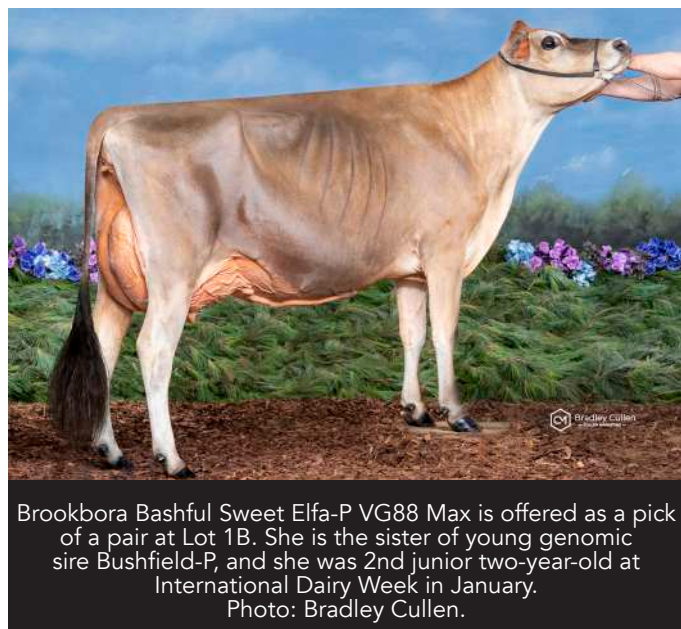
"We find it challenging to put ourselves out there, but we are quietly proud of the progress Brookbora has achieved – under the stewardship of our dedicated family members – and, with so much hard work, history, many photos, and shows behind us...here we are."

She said they had strived to breed highly commercial and functional cows from deep maternal lines that had the will to milk. The show cows had come organically, proving that the two weren't mutually exclusive. The sale will include 13 young cows classified to EX, including four that are scored EX92, with another two heifers scored VG88-Max. Fifty-seven lots come from dams that are classified EX (up to EX96) which also include up to 15 generations of EX.

Selling their best

Auctioneer Brian Leslie OAM said no-one spared the horses when it came to choosing which individuals to sell – noting that it was a nod to the immense respect the industry carries for the Bacon family.

“Wow, what an unbelievable line up,” Brian said. “It is indeed one of the most ‘complete’ offerings of dairy cattle ever offered in one catalogue on the one day in this country.



Brookbora Bashful Sweet Elfa-P VG88 Max is offered as a pick of a pair at Lot 1B. She is the sister of young genomic sire Bushfield-P, and she was 2nd junior two-year-old at International Dairy Week in January.
Photo: Bradley Cullen.

“Brookbora have left no stone unturned to sell their absolute best. Then they have gone out and selected the cream of the crop from all invited vendors from right around Australia. The Jersey breed is indeed fortunate to have folk like the Bacons, who continue to contribute to the betterment of the breed, and to the dairy community.”

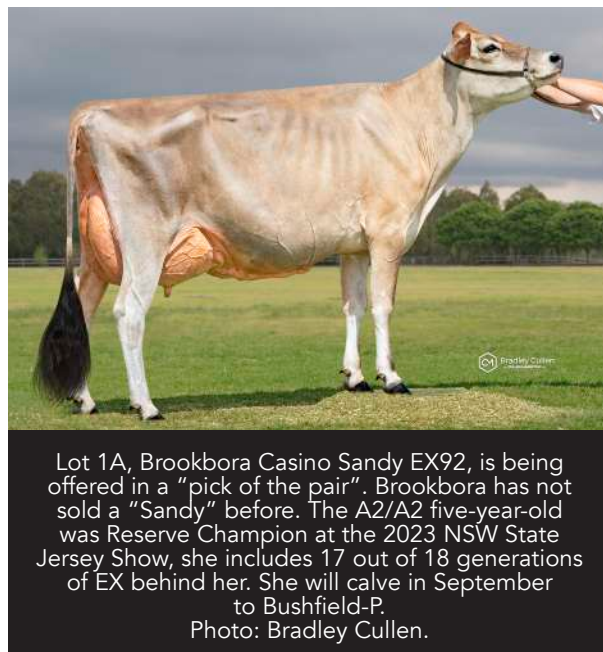
Inclusion is important

The family said it was a no-brainer for them to include other Jersey breeders in the sale. Its co-vendor prefixes are the “who’s who” of the Jersey fraternity from four states, including: Araluen Park (Shady Creek, VIC), Ashtaney (Mocolta, SA), Attaview (Poowong North, VIC), Benlee (Macorna, VIC), Benlock (Rochester, VIC), Cairnbrae (Irrewillipe, VIC), Cherrylock (Tallygaroopna, VIC), Craigielea (Bamawn, VIC), Emu Banks (Terang, VIC), Foleama (Tatura, VIC), Gorbro (Cohuna, VIC), Impression (Newry, VIC), Kaarmona (Kaarimba, VIC), Langdale (Mardan, VIC), Lerida Park (Princeton, VIC), Llandoverly (Girgarre East, VIC), Loxleigh (Tallygaroopna, VIC), Jackiah (Trafalgar, VIC), Jugiong (Girgarre, VIC), Merseybank (Latrobe, TAS), Miami (Cobrico, VIC), Mt Pleasant (Allansford, VIC), Mytee (Kongwak, VIC), Parrabel (Nowra, NSW), Philmar (Cobrico, VIC), Rockstar (Bega, NSW), Shirlinn (Tamworth, NSW), Tandara (Tandarra, VIC), Underground (Numurkah, VIC), Wallacedale (Poowong, VIC), Wanstead (Bookar, VIC), Warrion (Warrion, VIC), White Star (Noorat, VIC), and Windy Ways (Tongala, VIC).

“We wanted to make this a compelling event for our breed to celebrate Australian Jerseys and really showcase what our breed has to offer the business,” Daniel said. “People are what make our industry great – they are also an important part of

our personal journey – and we wanted to include our friends in this celebration. This catalogue proves that if you put your mind to something, it can happen.”

One of the headlining lots comes in the first “pick of the pair offering” at Lot 1A and Lot 1B. Lot 1A is Brookbora Casino Sandy EX92. Brookbora has not sold a “Sandy” before. The A2/A2 five-year-old was Reserve Champion at the 2023 NSW State Jersey Show, she includes 17 out of 18 generations of EX behind her. She will calve in September to Bushfield-P. Buyers can either choose Sandy or 1B, an exciting max-scored VG88 junior two-year-old, Brookbora Bashful Sweet Elfa-P – the sister of young genomic sire Bushfield-P. She was 1st junior two-year-old and Honourable Mention Intermediate Champion at the 2024 Gippsland Jersey Fair, and second junior-two-year-old at IDW 2024.



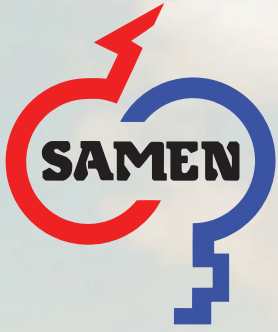
Lot 1A, Brookbora Casino Sandy EX92, is being offered in a “pick of the pair”. Brookbora has not sold a “Sandy” before. The A2/A2 five-year-old was Reserve Champion at the 2023 NSW State Jersey Show, she includes 17 out of 18 generations of EX behind her. She will calve in September to Bushfield-P.
Photo: Bradley Cullen.

Celebration

Daniel said the day is all about celebrating the Jersey breed, and the people who make it great.

“Our goal was to offer something for everyone from enthusiastic young breeders right through to our passionate, established breeders considering expanding their programme.”

Copy supplied by Dianna Malcolm, Mud Media



#1

A TRULY GREAT ACHIEVEMENT

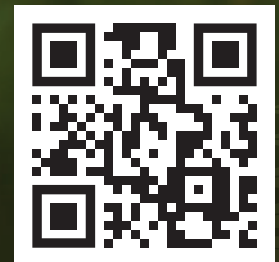
#1 All Breeds Dairy Sire

Arkans Achievement Keeps Getting Better! Since January 2024, Achievement has been the top BW sire of all breeds. The new data from May shows he's still the best, with a BW of 698—the highest ever for any bull in New Zealand.

See the amazing results with Arkans Achievement!
Order now and boost your herd's performance.

AE# 05/2024

663 **698**
gNZI 57% Rel BW 64% Rel



ORDER NOW

SAMEN

0800 220 232 | www.samen.co.nz



Stewart Anderson – Breeding to improve the NZ dairy industry

Nikita B. Damsgaard – Yield Marketing

Stewart Anderson grew up just out of Otorohanga, the Waikato, on his dad's farm. Anderson wanted to stay in the dairy farm industry but did not wish to take over the farm after his dad, as it was located on steep terrain. He decided to buy land on the other side of the road instead. Here, the terrain was flatter and more suitable for how he wanted to create his dream dairy farm. He now runs the Arkan farm of 450 cows and the Arkan stud with his wife Kathryn, and their staff Shaun and his wife Jenny, Caitlyn and Andrew.

In the Arkan stud, the couple has used a spectacular breeding program that has led them to breed a large number of premier sires over the last two decades, one of these bulls being San Ray FM Beamer ET S2F, known as Beamer. He was a premier sire from 2015 to 2020, and had 1 million straws in AB. In addition to that, there have been around 4 million inseminations in the national herd from the Arkan stud. Their herd on the Arkan farm has always been or close to being the number one herd with the highest breeding worth (BW) in the country.

The Arkan stud has been working extensively with Samen NZ Ltd for several years. In the newest Samen NZ breeding guide 2024-2025, you will find the number 1 BW sire Arkans Achievement and multiple other sires that come from great cow families. Samen NZ offers Arkans FD Front Runner, a polled maternal brother to Achievement along with Arkans IP Freedom who is an Achievement son. Arkans BreakFree; Maternal brother of Arkan IP Freedom.

Other sires coming from the Andersons herd include Global Future Direction Pp, Arkans New Leader and Arkans Amplify all coming from top NZ cow families. Every one of these sires live up to the standards that are set by both Stewart Anderson and

Photo: Freydan Gem Bracelet-ET, EX2, The Dam of Arkans Achievement and her owner Stewart Anderson.

the genetics team at Samen NZ who focus on selecting sires to maximize genetic gain for the NZ dairy industry.

Multiple breeding companies around New Zealand have contracts with Stewart Anderson and the Arkans stud, as they also see the great quality of the cows and sires that are being bred here.

Breeding values in the Arkan stud

The Andersons' goal with breeding is to create animals that will benefit the national herd. Their goal is to breed cows with good udders and a good body, a cow that gets in calf and produces well. When they breed sires it's important that there is a good cow family behind him, and their goal is to keep that family as good as possible. They strive to breed for profitability, production and farmer opinions.

For Samen NZ it is very important to invest in the future and keep up with what is happening around the world to bring new ideas to the New Zealand farmers. They strive for environmental sustainability and improved animal welfare in dairy production. While striving to do this they also keep the farmers in mind and search for qualities that the NZ farmer seeks; overall health, having good udders with high production and keeping conception rates high, says Craig Mckimmie, head of the genetics department.

Samen NZ selects the best bulls on the market to present for the New Zealand farmers, whether that is NZ bred sires or sires from all over the world. They always have the farmer in mind.



Arkans Achievement the number 1 BW sire

The golden bull calf

Stewart and Kathryn Anderson were on holiday up in North visiting Daniel and Freya Lynch whom the Andersons are good friends with. Daniel and Freya are the proud owners of the Lynches farm where they breed Jerseys.

The couple mentioned that one of their cows, Freydan Gem Bracelet, had had a son. Naturally, Stewart went over to see the calf. When he saw the little golden bull calf, he felt like this bull was going to be something great. The Andersons bought him on the spot and named him Arkans Achievement.

The number 1 BW sire

Arkans Achievement has been used for natural mating on heifers since he was bought by the Andersons. When he was 3 years old, they started using him for cows only and no heifers. In autumn mating 2023, Stewart started using Arkans Achievement for natural mating. While mating these cows and handling such a big bull, Stewart and Caitlyn noticed how well-behaved Achievement was. "We would open the gate to the cows, and he would walk straight in, do what he needed to do, and walk out again. He never stepped a foot wrong" says Stewart. He was amazed by how good of a temperament this bull had.

They mated 25 cows to Achievement, 23 of the cows got in calf and 18 heifers were born. "These are the same results we would have gotten if we had used sexed semen, it was amazing" says Kathryn when talking about their first-time using Achievement.

His staff Shaun handles the cows daily and takes care of the milking with Andrew. In the 21 years that Shaun has worked with cows, these heifers have been the easiest to break in. It didn't take them long to be comfortable with the rotary and they are easy to handle just like Achievement himself is.

When they did a herd test, they found that the daughters of Achievement were quite amazing, and the results were unbelievable. The somatic cell count was as low as 3 on some of the animals and didn't go above 12. This is when Stewart decided that he wanted to breed a quarter of his herd with Achievement in the spring mating season. He has once

before mated his whole herd with only two bulls, and both those bulls came out to be the sire of the century in the respective breeds, and he was confident that Achievement would be just as good.

He then proceeded to mate 25% of his herd with Achievement during the spring mating season of 2023. After he had mated his cows with Achievement, he saw the BW skyrocket, and suddenly Achievement was number 3 on animal evaluation and before he could take in the good news, he was number 1. Achievement has now been the number one BW bull since January 2024 and is still at number one after the latest run in April 2024.

The genetics team at Samen NZ recognized that Arkans Achievement had the qualities they were looking for in their breeding programs and made a deal with Stewart Anderson in spring 2023, prior to him being the bull with the Highest BW. His daughters were showing extreme production and high component percentages, while also being very fertile, having low somatic cell count and very good udders. There was no doubt, farmers needed a chance to use him in the mating season of 2024.

The Dam of Achievement

Freydan Gem Bracelet was born in 2013 and gave birth to Arkans Achievement in 2018 when she was 5 years old. She was bred by the Lynch family, but the Andersons bought her and her son Achievement. She has always been an all-round good cow who has been high performing. She comes from a good cow family who has contributed to the breeding of some very good sires. Other than being the dam of the number 1 BW sire, she is also the Granddam of the number 1 genomic bull at a different genetics company.

She is now 11 years old and is still in the top 30% of the Andersons herd. "She has a lactation worth of 753 which makes her number 17 in our herd, her production worth sits at 589 and her breeding worth is 486," says Stewart as he checks the data of their herd with 450 cows.

Lifelong dream coming true

Stewart Anderson certainly has a passion for cows and knows how to build a herd of high quality. He loves his job and every aspect of it. He always strives to breed better cows and add value to the New Zealand dairy industry. Although he has had great success with all his premier sires throughout the years, nothing beats being the owner of the number 1 BW bull, and Bracelet the dam, who has not only bred Achievement but also plays a very important role in the breeding of other great sires from the Arkan stud.

Stewart Anderson himself would say that this is his greatest Achievement.

Regional Ambassadors

A few of our Regional Ambassadors have been out and about visiting local farmers and spreading the word for JerseyNZ and the Jersey cow. We very much appreciate the work they continue to do for the Association. You can find your local Ambassador in the list below, alternatively you can reach out to the JerseyNZ office who will be able to recommend someone in your area to discuss any queries you may have either with the Jersey breed or what JerseyNZ can offer you.

We are still seeking an Ambassador in the Bay of Plenty, West Coast and Southland regions who may be interested in taking on this role. It's an exciting time to join this initiative, and Ambassadors are well supported by the other Ambassadors and the JerseyNZ office.

Purpose:

- To be the face of JerseyNZ on farm and in the field
- To support members and potential members of JerseyNZ
- To represent and advocate for the work of JerseyNZ and hold to the highest standard the purpose and values of the organisation

General Guidelines: Provide a two-way communication between the JerseyNZ Board of Directors, JerseyNZ Membership and Jersey Clubs in their respective region.

- Provide a presence representing JerseyNZ at regional industry events and Jersey Club events
- Promote breed relevance within the industry while representing JerseyNZ
- Approach prospective new members in their respective regions
- Where the position is filled by a qualified TOP classifier; include the promotion and additional service of TOP & Classification

Clubs and members alike are encouraged to use this valuable resource to increase participation with JerseyNZ.

JerseyNZ Regional Ambassadors 2024

Convenor:

Northland: **Graeme Collins**
027 426 1172 / 09 423 7058
waiteitei243@gmail.com

Team:

Waikato: **Des Hickey**
027 450 9346 / 07 828 5902
2deshickey@gmail.com

Waikato: **Don Shaw**
021 069 1236 / 07 870 1482
donandlynne@xtra.co.nz

Taranaki: **Tony Luckin**
027 540 0130 / 06 752 4192
leithlea@xtra.co.nz

Lower North Island: **Karen Fitzgerald**
027 408 0098 / 06 329 3224
karenfitz@xtra.co.nz

Upper South Island: **Brian Nesbit**
027 225 9969 / 03 525 9969
chardonnay.nz@gmail.com

Upper South Island: **Ted Ford**
027 444 2805 / 03 544 2805
westbourne@xtra.co.nz

Canterbury: **Robert Hall**
027 431 8610 / 03 348 8406
8raro8@gmail.com



WHY JERSEYS?



per KG Liveweight



per KG Liveweight



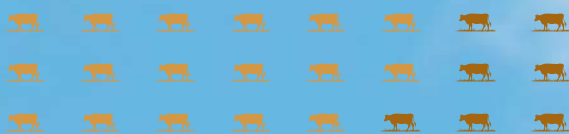
at Converting Feed

The Jersey cow returns a **better per kilo liveweight** comparison over all other breeds in milk fat, protein and milk solids. She also delivers **greater breeding values** than other dairy breeds. Jerseys are **faster to milk** and have greater calving ease, with the **highest fertility** breeding value. When stocked at optimal rates, Jerseys produce approx **8% more profit** than its closest competitor, making it the **sustainable choice of breed**.

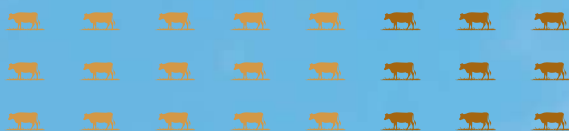


Sustainable

- Greater efficiency, greater profit
- Higher rate of dry matter to milk
- Higher heat tolerance
- More environmentally friendly
- Lower gas emission
- Lower nitrogen levels



66% of Jerseys Already Carry The A2A2 Gene



OAD MILKING

Jerseys are the most adaptable breed for once-a-day milking, due to...

- Better udder conformation
- Higher milk solid percentages
- Able to carry 24 hours of milk production

Want to Know More? Visit our website for in-depth articles, statistics, news, and more

Lower Waikato Jersey Club

In the late 1940's, Mr. Wilfred Harper canvassed the surrounding districts of Te Kauwhata to see if there was enough interest in forming a Jersey Club.

The first meeting being held on 12 April 1948 when Te Kauwhata Jersey Cattle Club came into being on the motion of Mr. Alf Sherrard and seconded by Mrs. W Henry. Wilfred was the first secretary, a position he filled until 1955.

To celebrate the club's 75th anniversary special ribbons were printed off for the annual club show which was held at Brett Dyson's farm in Taupiri, and judged by Mr Luke Gilbert in early November. Note the annual shows for the club didn't begin until 1967.

Results:

Champion Cow:

Glenalla Hired Wendy exhibited by Sherborne Farms, S & A Scherer

Reserve Champion Cow:

Zenith Lemon Blissta exhibited by R & A Gibb

Junior Champion:

Ebboni Hoss Sylvie exhibited by N Dyson

Reserve Junior Champion:

Glenhaven TS Ariat exhibited by B Dyson

In early March a luncheon was held at the Garden Grove Café in the Woodlands Estate to which both past and present members were invited. Mr & Mrs A Hintz, the club's patrons, cut the celebratory cake and Mr Alan Hintz said a few words. Mrs Natalie Dyson read out a short history of the club that had been prepared by Alan.



Club patrons, Alan and Maureen Hintz cutting the cake

President - Natalie Dyson, Ebboni

Secretary - Alison Gibb, Zenith



All the attendees at the luncheon

Some of the points made were:

- 10 May 1948 the club formulated rules to conduct bull sales; the first being held in the Te Kauwhata saleyards 17 September of that year.
- As farmers in the Te Kauwhata area discontinued Jersey breeding or moved away, in July 1966 it was decided to change the venue of the club to Taupiri to strengthen it. The name was changed to Lower Waikato Jersey Cattle Club to reflect that the club was centred at the lower reaches of the Waikato River.
- Monthly meetings were held in Taupiri War Memorial Hall with a roster of members doing supper duties and providing firewood for the open fire during the winter months.
- In 1987 another change was made to monthly meetings being held in members' homes, sometimes daytime sometimes night.
- The first club show was held in November 1967 and Mr. Jack Moreland, then President of New Zealand Jersey Breeders Association officiated as judge. The show was held in the Taupiri Domain until this venue became unavailable in 1975 due to construction on the Eastern Highway. A new venue was found at the Taupiri Rugby Football ground and in 1977 the decision was made to hold the club shows on members farms thus solving the problem of seeking a portable milking machine and loading race which required assembling and dismantling at the conclusion of the show.

Lower Waikato meets regularly on the first Thursday of every month beginning in August with a Pizza and Programme Planning evening. The programme revolves around a mix of herd walks, speakers and social events. New members are welcome.

Please contact the Secretary – Alison Gibb
Ph 027 4810 820 or email arrk.gibb@gmail.com.

Te Awamutu Jersey Club

The Te Awamutu Jersey Club holds regular meetings and various activities relating to dairy farming and breeding, with family friendly events to include juniors. We cover a wide geographical region and welcome visitors, new members and neighbouring Jersey Club members also. Below is a summary of activities since the November 2023 Jersey Focus publication.

Our October herd visit was to Cherrylane Jerseys, hosted by Andrew Shaw. Andrew runs a unique system with the aim of growing enough feed between the home farm and run off to make the farm almost self-sufficient. Andrew has lowered the stocking rate and improved cow production while moving the herd towards full autumn calving. Members enjoyed viewing the herd and the wide ranging discussion over lunch. It was a beautiful morning and the very quiet cows were a pleasure to walk amongst.



Cherrylane Jerseys - Wayne & Lisa Shaw

The very successful Te Awamutu Jersey Club Junior Classic was held on Saturday 4th November 2023. Junior members, family and friends enjoyed the beautiful grounds of the Kihikihi Domain and our Judge Peter Cumming did a great job. Peter commented on the excellent standard of all entrants. The horse event being held at the Domain over the weekend added to the atmosphere. We look forward to seeing the entrants again in two years, as they are eligible for the Potts Memorial Trophy competition.

Class Winners

McGregor Trophy winner:
Pampas Lane Famous Amber - Lucy Fitzgerald

Leading Winner:
Anchor Webcam Riley - Elouise Shaw

Rearing Winner:
Pampas Lane Famous Chelsea - Paige Fitzgerald

Type Winner:
Pampas Lane Famous Amber - Lucy Fitzgerald

President - Richard Adam, Carnmor
Secretary - Shirley Hamilton, Drumclog
Media - Don Shaw & Glenys Ellison

The Agrisea Jersey Classic Show 2023 was held on farm from 20-23 November. We had some outstanding cattle on display and it was also great to see so many club members joining the tour, which visited 14 farms, covered 640 Kms and Peter Gilbert judged 129 cows. The weather was good for all three days and Peter was impressed with the quality of cows presented and the fact that the top animals were spread over many farms. Many thanks to our judge, supporters, and all of the entrants. The Prizegiving evening was held at the Mangapiko Hall. This provided an excellent venue and we enjoyed a great pot luck dinner. It was good to have all age groups participating in the evening.



Karaka Aussie Maid Marie - C & J Turner

Class Winners:

2yo Class:
Manor Buzzbox Athena - Jeyes Family

3yo Class:
Thornlea Hoss Tansy ET - N & J RilIntermediate
Champion
Thornlea Hoss Tansy ET - N & J Riddell

Reserve Intermediate Champion:
Lindsay Park Minx - C & D Perrot

4yo Class:
Denson Dale Virgo Claire - T & L McAllister

5yo Class:
Westell Front Cassie - Jeyes Family

6-7yo Class:
Karaka Aussie Maid Marie - C & J Turner

8yr+ Class:
Denson Dale Tbone Vestry - B & BR Pickett

Champion Cow:
Karaka Aussie Maid Marie - C & J Turner

Senior Reserve Champion:
Ruanui Terrific Dixie ET - R & G Ellison

Best Uddered Class:

Karaka Aussie Maid Marie - C & J Turner

Dam & Dtr, or 2 Dtrs:

Thornlea Hoss Tansy ET & Thornlea Vans Tansy
- N & J Riddell

3 Cows by same sire:

Sire Broadlin Buzzbox - Jeyes Family

Classic Herd Group:

A & J Courage



Sharons Jerseys - A & J Courage

Our Christmas herd visit was hosted by Anchor Jerseys on Monday the 11th December 2023. Aleasha Shaw and the Shaw family welcomed a big turnout of members and supporters for our final outing of 2023 and Farm Source provided an enjoyable lunch. We had an excellent discussion and viewing of Aleasha's very good herd.



Anchor Jerseys - Aleasha Shaw

The On-Farm Index & Type Competition was held on the 8th & 9th February 2024. It was an excellent couple of days with Craig Rapley judging 137 cows, spread over 10 farms. Participating farms entered between 6 and 22 cows. The pot luck Awards Evening was held on the 18 February at the Mangapiko Hall. There was a lot of fun & chatter, music, slideshow and children's games. A good evening was had by all.

Class winners:

Herd Team - Arthur Berry Memorial trophy:
G & C Wilson

2yr In-milk Heifer Team - Pam Thompson Trophy:
R & G Ellison

3yr old - Heron Hill Shield:
Wee Burn Hoss Chekita - G & C Wilson

Superior Cow - R & M Shaw Trophy:
Wee Burn KPin Dee - G & C Wilson

Individual In-milk Cow new member +/- or under 30yr,
Jersanne Trophy:
Thornlea Tino Tansy - Ellie-May Riddell

3 Generations In-milk:
J & K Sneddon

10yr and over - Mark Shaw Award:
Golden Brae-11-154 - J & K Sneddon

J and A Ellis Genetic Award;
Thornlea Sp Honey - N & J Riddell

Futurity Class, Type section Potts Trophy;
Tahau Prime Anna - Kyle Sneddon

Willersden Trophy, Highest Overall Conformation Cow:
Tahau Degree Luck - J & K Sneddon



Wee Burn Hoss Chekita - G & C Wilson

Brendon White of Maharee Jerseys hosted our March herd visit with a good turnout of TA Club members and visitors from the the Te Aroha Club. Brendon's herd includes cows with the Maharee, Glen Leith & Okura prefixes, which have all contributed bulls for AB companies. The cows were very sociable and a lovely Waikato day made it an excellent outing.

New members welcome, enquiries to any of the above Executive members.

HAWERA CLUB SHOW RESULTS
15th – 16th February 2024

Judge: John Ellis
14 Exhibitors, 155 Head Entered

Two year old class:

- 1st: 4 - Allandale Valiant Bailee - Amy & Lynden Muggeridge
- 2nd: 437 - Derriland PKC Idol - Derek & Brenda Tosland
- 3rd: 7 - Glenbrook Hoss Cowgirl - Cliff Shearer

Three year old class:

- 1st: 25 - Silverstone Ivors Nadia - Amy & Lynden Muggeridge

Reserve Champion Cow

- 2nd: 42 - Glenbrook Carpediem Cloak - Cliff Shearer
- 3rd: 303 - Kelland Triple Kandy - Derek & Brenda Tosland

Four year old class

- 1st: 22 - Glenbrook Cato Creation - Cliff Shearer

Champion Cow

- 2nd: 14 - Linan Chandra - Colin & Linda Megaw
- 3rd: 240 - Silverstone Star Queta - Amy & Lynden Muggeridge

Five & Six year old class

- 1st: 50 - Glenalla Colton Comet ET - Cliff Shearer
- 2nd: 252 - Truday Glorys Sage - Lynden & Amy Muggeridge
- 3rd: 47 - Glanton Desi Binky - Rob & Alison Thwaites

Seven to nine year old class

- 1st: 377 - Derriland OI Dawn - Derek & Brenda Tosland

Honourable Mention

- 2nd: 93 - Kuku Van Hazel - Lynden & Amy Muggeridge
- 3rd: 223 - Kelland Speed Faye - Mrs Gloria Tosland

Ten plus year old class

- 1st: 31 - Allandale Celeb Queen - Lynden & Amy Muggeridge
- 2nd: 389 - Derriland Can Zona - Derek & Brenda Tosland
- 3rd: 10 - Sublime 14-30 - Tony Barlow & Tina Hardcastle

Yearling Heifer

- 1st: 57 - Silverstone Val Candy - Lynden & Amy Muggeridge
- 2nd: 16 - Glanton Hoss Sarah - Rob & Alison Thwaites
- 3rd: 38 - Linan Flower - Colin & Linda Megaw

Heifer calf

- 1st: 11 - Glanton F C Bane - Rob & Alison Thwaites
- 2nd: 37 - Glenbrook NSD Copenhagen - Cliff Shearer
- 3rd: 3 - Glenlui Vulcan Shalon - Tony & Lesley Landers

Bull calf

- 1st: 292 Nellta 23-292 - Nellta Holdings
- 2nd: 62 Glanton 23-62 - Rob & Alison Thwaites
- 3rd: 54 Kelland Novak - Kelvin Tosland

Industry Cow

- 1st: 96 - Glanton Triple Baxter - Rob & Alison Thwaites
- 2nd: 228 - Glenlui Floyd Abbey - Tony & Lesley Landers
- 3rd: 377 - Derriland OI Dawn - Derek & Brenda Tosland

Sires Progeny Contest

- 1st: Okura Integrity at Glenlui - Tony & Lesley Landers
- 2nd: Okura Integrity at Derriland - Derek & Brenda Tosland
- 3rd: Okura Integrity at Conna's - Conna Smith

Overall Points Prize

Silverstone Jerseys - Lynden & Amy Muggeridge



Glenbrook Cato Creation

CALL TO ACTION – JERSEY PRODUCERS

Do you know someone who is creating Jersey milk product?

We would love to be able to feature them on our website and provide links to their websites. It can be anything - milk, cheese, yoghurt and other food products or even Jersey themed gear.

Contact Pam Goodin pgoodin@jersey.org.nz

Jersey NZ's Strategic Plan 2024

CORE PURPOSE:

Supporting our membership and wider Jersey community by promoting and driving the Jersey breed and Jersey products

BHAG:

Jersey #1 Breed

Adding integrity and value to your farming business

VISION:

Recognised for leading in

- Profitability and efficiency
- Membership and engagement
- Genetic gain
- Reduced environmental footprint
- Consumer preference
- Animal welfare

CORE VALUES:

Integrity | Sustainability | Quality | Collaboration

3 YEAR STRATEGIC PRIORITIES:

PEOPLE & CULTURE

- An organisation that is up to the task
- Membership focussed
- Youth engagement
- Stakeholder engagement
- Enhance relationships between management & governance

FINANCE

- Increase members participation and use of core services
- Continue & increase diversity of income streams
- Incentivise DNA & genomic testing
- Refinance Jerseyland Farms investment loan

MARKETING & SALES

- Consumer awareness of the Jersey benefits
- Collaborate with Jersey Advantage for consistent messaging
- Sustainable bobby calf solutions available for dairy farmers
- Actively positioning Jersey NZ

TECHNOLOGY

- Modernisation of administration programmes utilising BreedIT
- Provide scientific research to validate vision
- Genetic diversity

1 YEAR STRATEGIC PRIORITIES:

PEOPLE & CULTURE

- Ensure appropriate team numbers and resourcing to achieve goals
- Increase our numbers of TOP Inspectors
- Survey member feedback and develop multiple channels for member & club engagement
- Empower our Ambassadors
- Youth Council engagement
- Maintain and continue to form collaborative partnerships with industry leaders

FINANCE

- Budget & forecast profit – planned debt reduction
- Explore collaborative relationship around genomic testing
- Explore diversity of income streams

MARKETING & SALES

- Maintain awareness of consumer trends and animal welfare issues
- Keep driving membership numbers – National Fieldays
- Refine and promote our value proposition – breed & organisation

TECHNOLOGY

- BreedIT fully operational – bespoke opportunities explored
- Member Focus groups

Reviewed in 2024 the full Strategic Plan includes One and Three Year Strategic Priorities along with 90 day Action Priorities. The full Strategic Plan can be viewed at www.jersey.org.nz/governance/

Advertisers Index

World Wide Sires	Inside Front Cover
LIC	Inside Rear Cover
Fyvie Meadows Limited	Outside Rear Cover
Bidr	pg 8
Karaka Jerseys	pg 13
Glenui Jerseys	pg 39
Crescent Genetics	pg 41
Ngatea Jerseys	pg 55
Samen Ltd	pg 62

To book your advertisement for the next Jersey Focus, email info@jersey.org.nz

Next issue:

NOVEMBER 2024

Deadlines:

Bookings for advertisements
4 October 2024

Material for advertisements
11 October 2024

Subscriptions:

Published June and November of every year.

Subscriptions are \$60.00 plus GST per annum or \$NZ100.00 for overseas subscribers.

Free to JerseyNZ members.

Contact info@jersey.org.nz for more information

In My Opinion:

We invite your contributions In My Opinion. Not all contributions will necessarily be published and the Editor reserves the right to edit articles for publication and to have the right of reply on any issues raised. All informed comment (letters and articles) will be considered for publications.

The Editor Reserves the Right:

To accept, amend or reject any advertisements, editorial or article submitted for publication. While every effort will be made to publish advertisements as ordered, no responsibility is taken for the failure of an advertisement to appear as ordered or for any errors or omissions in the printed copy.

Opinions expressed by editorial contributors or claims made in advertisements are not necessarily those of The Jersey FOCUS, General Manager and Board of JerseyNZ.

© Jersey NZ 2024

All rights reserved. Permission for one time reproduction of selected editorial may be granted by contacting the editor.



Continue breeding your best with sexed semen

You're looking forward to the end of the season; getting the dry off done and you're starting to think ahead.

Now's the time to start making some good calls with your mating plan for next season.

Choosing female sexed semen can help you breed the best cows, faster. By generating heifer replacements from your best performers, you can maximise cow efficiency which also helps reduce your emissions intensity. And selecting fresh over frozen is best - with Premier Sires® sexed semen teams delivering near normal non return rates.

So, before the cows dry off, put your best foot forward for next season and lock in your sexed semen order.

Talk to your Agri Manager today about sexed semen or visit lic.co.nz/sexedsemen

There's always room for improvement

 **LIC**®



BREEDING FOR RESULTS

The home of:



Russell & Alison Gibb

P 07 824 4425
E arrk.gibb@gmail.com
A 127 Procter Road,
RD2 Taupiri 3792,
New Zealand



Natalie Dyson

P 027 305 4532
E gibbvj@gmail.com
A 103 Procter Road,
RD2 Taupiri 3792,
New Zealand